

myAudience Count

User's guide

Table of Contents

Table of acronyms and definitions	4
1. System overview.....	5
2. Before you start.....	5
2.1. What you need	5
2.2. Preparing installation media	6
2.2.1. To prepare CD for installation	6
2.2.2. To prepare USB flash drive for installation.....	7
3. Software installation	9
3.1. To install software from CD.....	9
3.2. To install software from USB flash drive	13
4. Measuring Device mounting	17
5. Camera positioning.....	18
6. Measuring Device configuration	18
6.1. Access to the Measuring Device.....	18
6.2. User Interface overview	20
6.3. Network configuration overview.....	20
6.4. Network settings	21
6.5. Device administration.....	26
6.5.1. Hardware configuration for Measuring Device replacement	28
6.6. System log report	29
6.7. Camera preview access	31
6.8. Camera calibration	32
6.8.1. Counting line position and length adjustment.....	33
6.8.2. Counting line calibration	34
6.8.3. Traffic direction settings.....	37
7. Operations with Reports Portal.....	37
7.1. Reports Portal overview	37
7.2. User Profile	38

7.3.	Measuring Device registration	38
7.3.1.	Add new Measuring Unit.....	39
7.3.2.	Reset Measuring Device	41
7.3.3.	Delete the Measuring Unit	41
7.3.4.	Purge the Measuring Unit	42
7.4.	Group creation	43
7.4.1.	To add a group.....	43
7.4.2.	To edit the group	45
7.4.3.	To remove the group	45
7.5.	Managing Measuring Units and groups	46
7.6.	Reports Portal notification service	49
7.7.	License management.....	51
7.7.1.	myAudience-Count licensing model overview	51
7.7.2.	To purchase new or extend the existing license	53
7.8.	Understanding the measurements.....	53
7.8.1.	Metrics calculation wizard.....	53
7.8.2.	Sidebar control options	57
7.8.3.	Charts management	58
7.8.4.	Data export.....	59

Table of acronyms and definitions

<i>Measuring Device</i>	Dedicated PC-box with myAudience-Count software installed gathering people traffic statistics at a gateway of the given location. Measuring Device operates with single USB or IP camera and requires permanent Internet connection to enforce license status and transfer measuring data.
<i>Measuring Unit</i>	Record on Reports Portal related to physical Measuring Device
<i>Installation package</i>	Single ISO-file containing myAudience-Count software to be installed on Measuring Device.
<i>Reports Portal</i>	Special Internet web portal that aggregates data from all Measuring Devices and provides secure access to this information. Reports Portal allows users to view status of their Measuring Units and group/ungroup them for consolidated metrics calculation.
<i>People counting line</i>	Virtual tripwire horizontal line visualized at the camera preview screen. Entering and exiting people are counted while crossing this line in both directions.

1. System overview

myAudience-Count helps customers analyze people traffic at indoor locations:

- identify the most crowded and empty locations,
- define the attendance peak and fall periods,
- track the impact of marketing actions by changes of attendance rate.

Primary function of myAudience-Count system is to calculate number of entries and exits for a given location and derive number of people staying within this location. Having these data stored on web Reports Portal, users have access to the information about people traffic for any specified location at any time.

System works on PC platform connected with top-mounted IP or USB camera with permanent Internet access to transmit data to Reports Portal. No image or video is recorded; data is transferred anonymously without any harm to visitors' confidentiality.

2. Before you start

Please follow the instructions listed below to get ready for Measuring Device installation.

2.1. What you need

1. Dedicated PC to be used as Measuring Device (please refer to the instructions at <http://www.myaudience.com/count/hardware>). It is highly advisable to use the recommended hardware only to avoid issues with hardware interoperability.

Note! All previously installed software and data stored on Measuring Unit's hard disk **will be completely erased** during the installation process

2. Camera to be attached to the Measuring Device to provide top view image of the measuring location (please refer to the instructions at <http://www.myaudience.com/count/hardware>).
3. Local network access for Measuring Device configuration. Installation requires the Measuring Device to be attached to Ethernet during the configuration process.
4. Keyboard and monitor to attach to Measuring Device PC-box during installation process.
5. Any other PC to be used for configuration of Measuring Device, connected to the same Ethernet segment as Measuring Device, with browser (Google Chrome, IE 8.0+, Firefox) installed. Please make sure configuration PC's IP address is different from the address of any other machine in this segment (including IP address of Measuring Device to be configured).
6. Network information (contact your network administrator for these details):
 - i) IP address to be assigned to the Measuring Device
 - ii) Netmask to be assigned to the Measuring Device
 - iii) Gateway used in your network
 - iv) Primary DNS used in your network

- v) IP address for IP camera

Note! If you use IP camera, please confirm with your network administrator, that IP address stated in the Camera User's Manual will stay the same for your installation.

7. Installation media (CD or USB flash drive) for Measuring Device setup (please refer to section 2.2 for instructions).

2.2. Preparing installation media

2.2.1. To prepare CD for installation

Note! If CD-RW is used, all data from the CD **will be completely erased** while creating bootable disk.

- i. Download the Installation package from <http://www.myaudience.com/count/download> to computer storage.
- ii. Insert CD to your computer CD Drive.
- iii. Create bootable CD with the help of CD burning tool www.myaudience.com/downloads/utis/iso_image_burner_setup.exe. Specify the path to the saved ISO-file, choose the name of CD-R/RW Driver with installation CD and press "Burn" button.

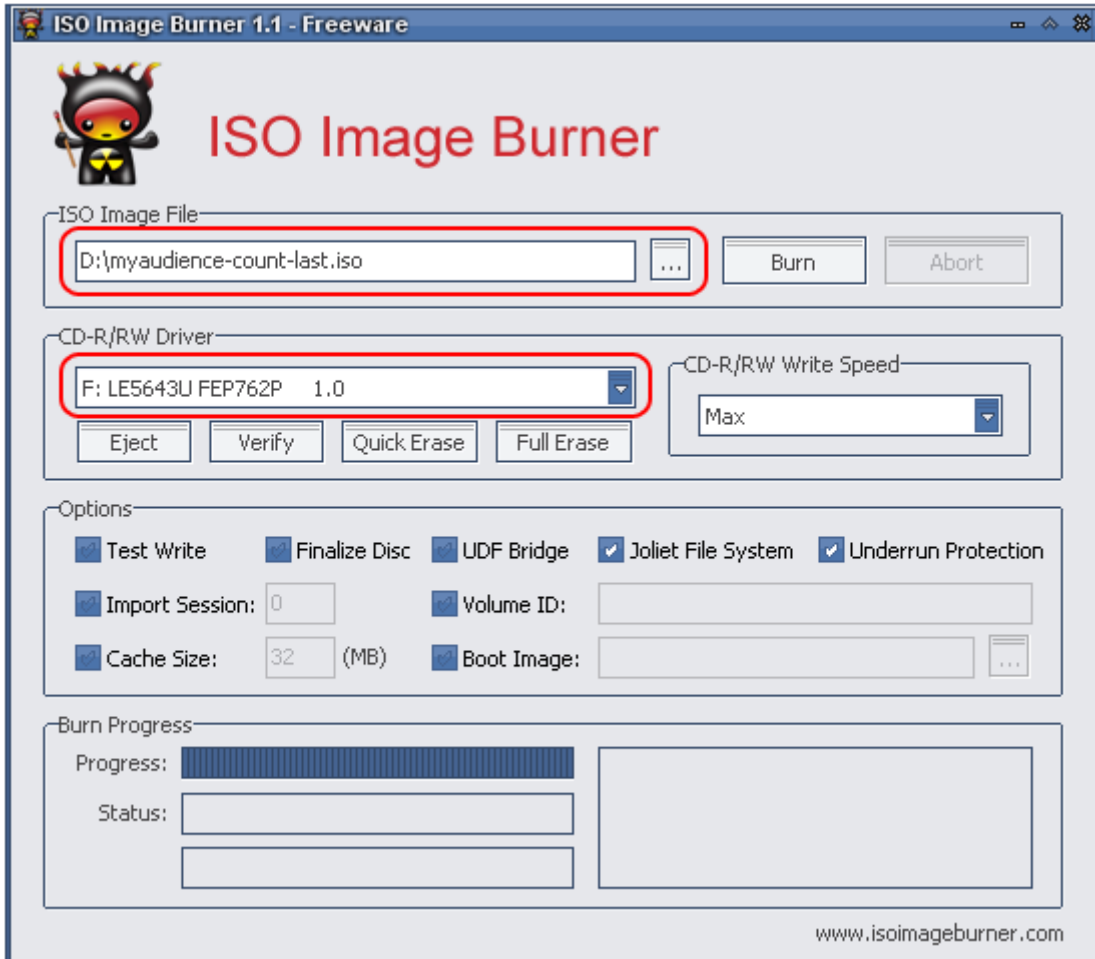


Figure 1: burning bootable CD.

2.2.2. To prepare USB flash drive for installation

Note! While formatting the USB flash drive all data from drive **will be completely erased.**

- i. Format USB flash drive using HP USB Disk Storage Format Tool (<http://www.myaudience.com/downloads/utills/HPUSBDisk.exe>), file system – FAT32 (Figure 2)

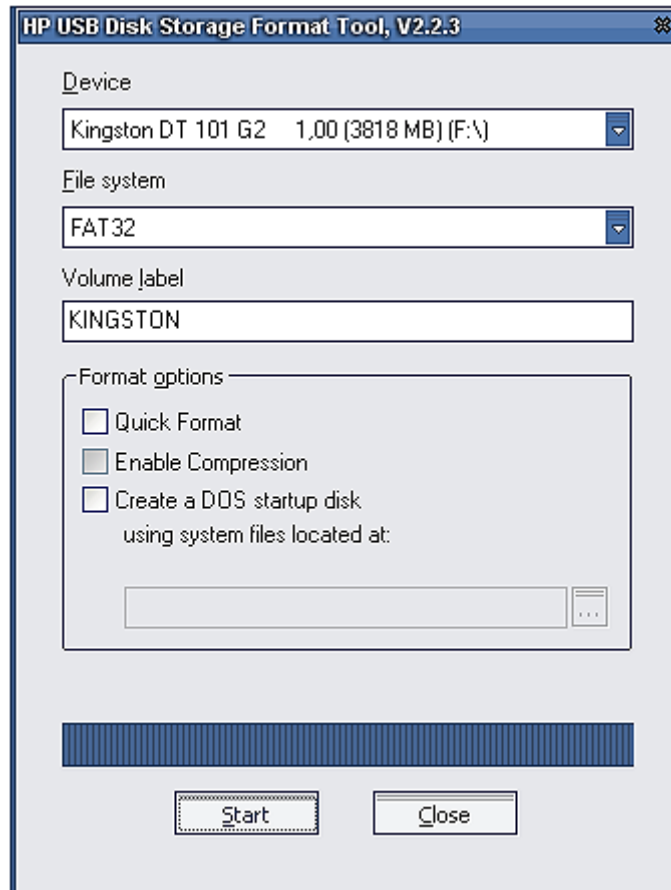


Figure 2: flash drive formatting.

- ii. Download the Installation package from <http://www.myaudience.com/count/download> to computer storage.
- iii. Create bootable USB flash drive with Installation package using iso2usb tool (<http://www.myaudience.com/downloads/utis/iso2usb.exe>). Open Installation package, select an appropriate USB drive and press "OK" (Figure 3)

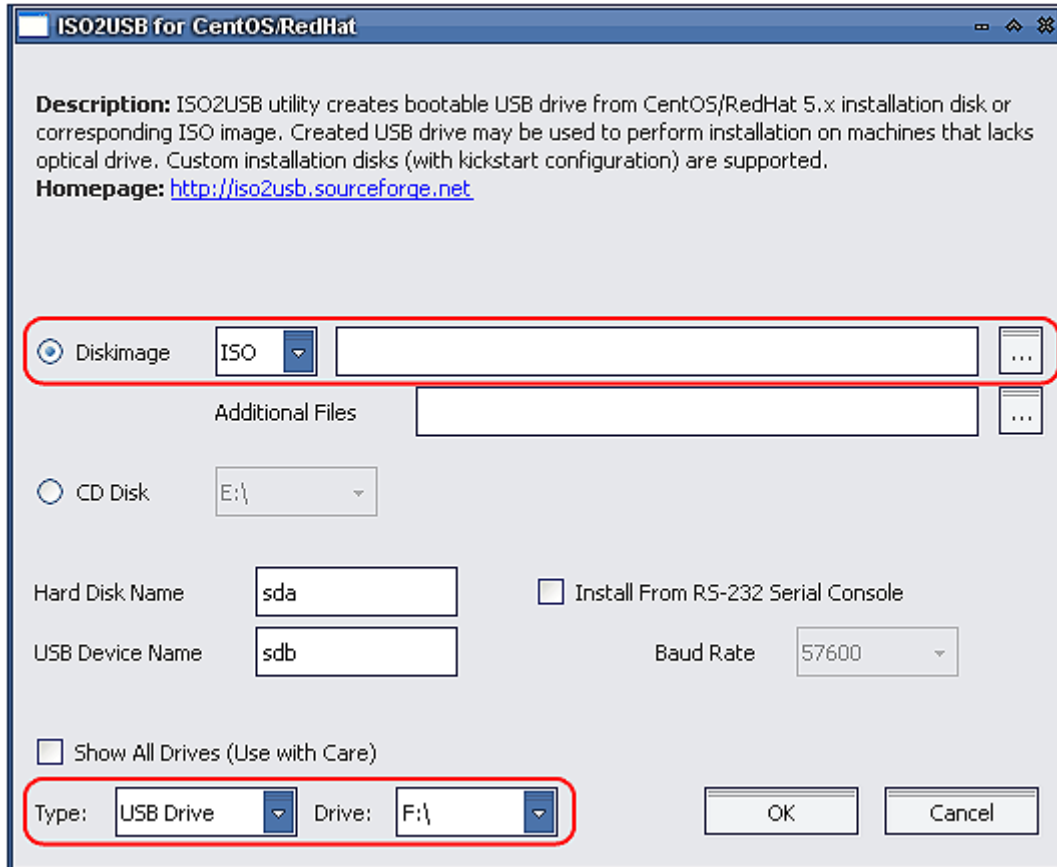


Figure 3: creating bootable flash drive.

3. Software installation

Note! All previously installed software and data stored on Measuring Unit's hard disk **will be completely erased** during the installation process

Use prepared bootable CD or USB flash drive as described in section 2.2 to install myAudience-Count software onto the Measuring Device.

3.1. To install software from CD

1. Turn on the Measuring Device.
2. Insert CD to CD-drive of the Measuring Device.
3. Attach monitor and keyboard to the Measuring Device.
4. Restart the Measuring Device.
5. Configure BIOS to boot Measuring Device from CD as described below:

Note! Following steps are applicable for American Megatrends BIOS setup. If you have other manufacturer's BIOS, please refer to BIOS User Manual.

- a. On boot, before you hear the typical starting signal of processor, keep hitting **DEL** to enter **BIOS Setup**.
 - b. In menu on screen, enter the **Advanced BIOS Features** section.
 - c. Set **CD&DVD** as **1st Boot Device**.
 - d. Save results and exit BIOS.
6. Unit will boot from CD.
 7. Keep waiting till following screen appears and press Ok (Figure 4)

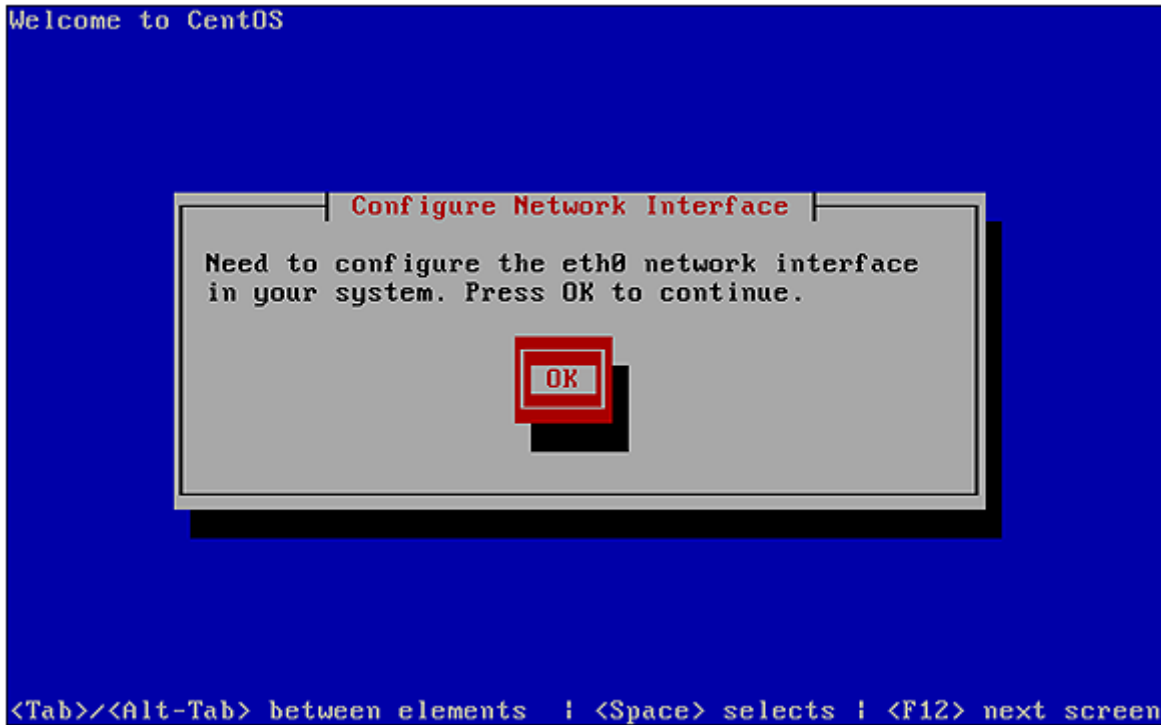


Figure 4: network parameters configuration request.

8. Enter Measuring Device's IP address and Netmask, received from your network administrator, and press Ok on the next screen:

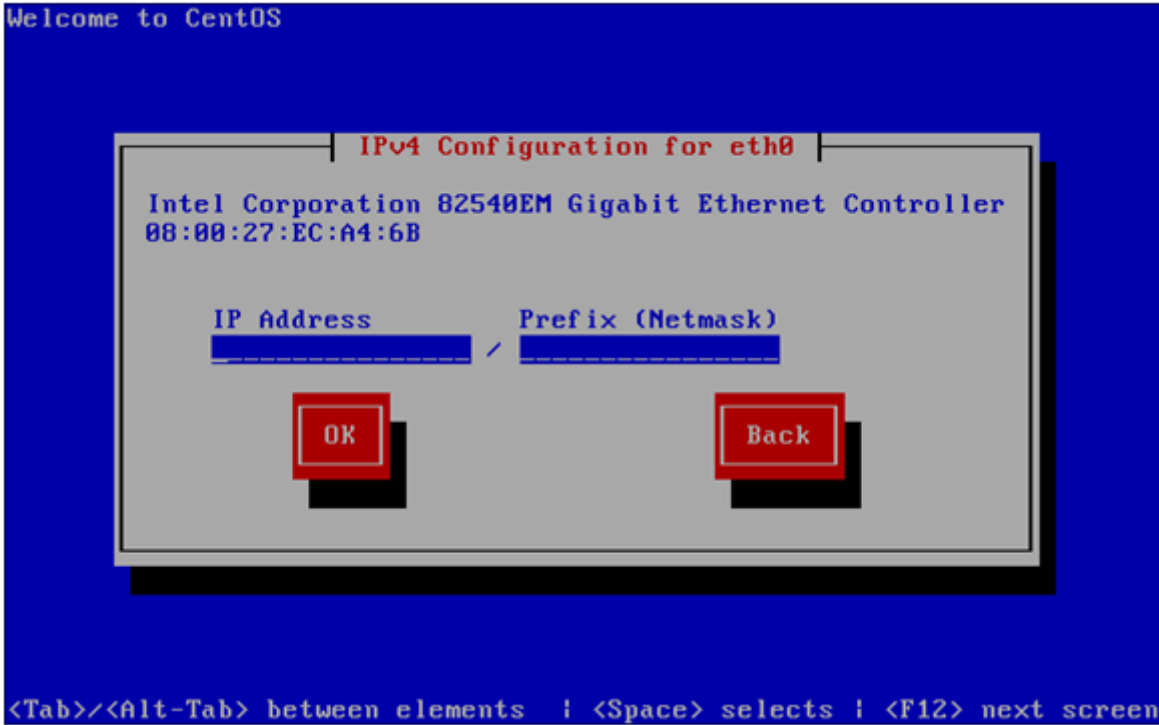


Figure 5: IP address/Netmask input.

9. Enter Measuring Device's Gateway and DNS, received from your network administrator, and press Ok on the next screen:

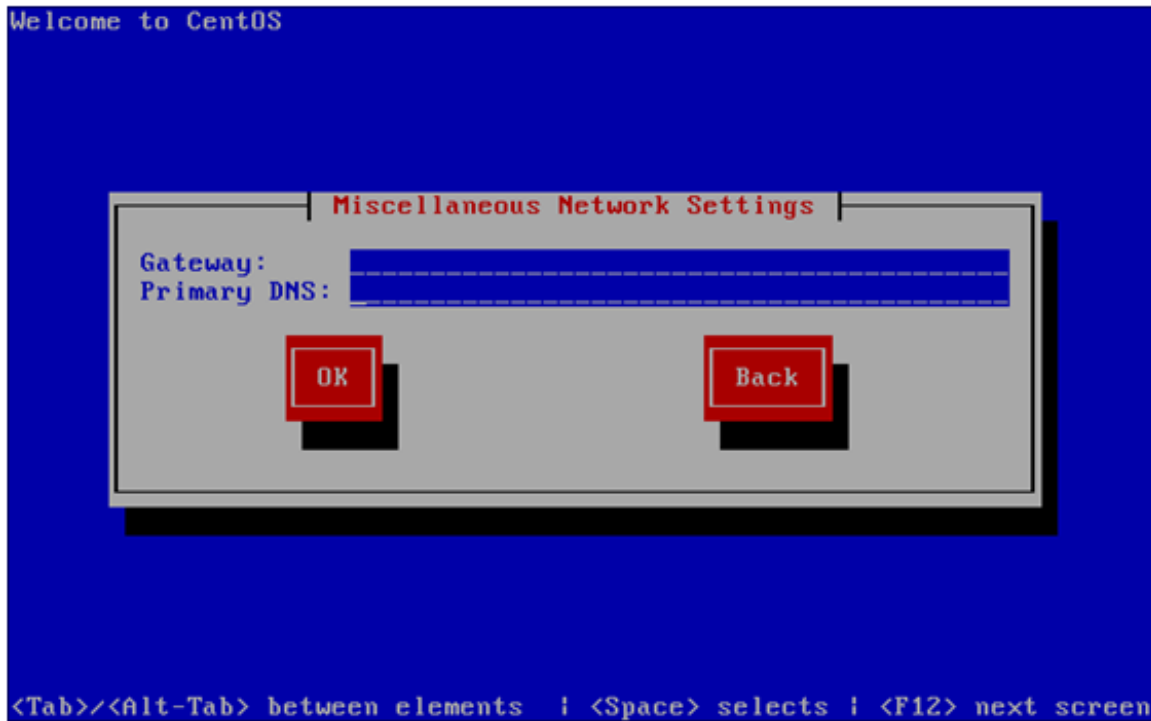


Figure 6: gateway/DNS input.

10. Leave default or change at your option Measuring Device's Host name and press Ok on the next screen:

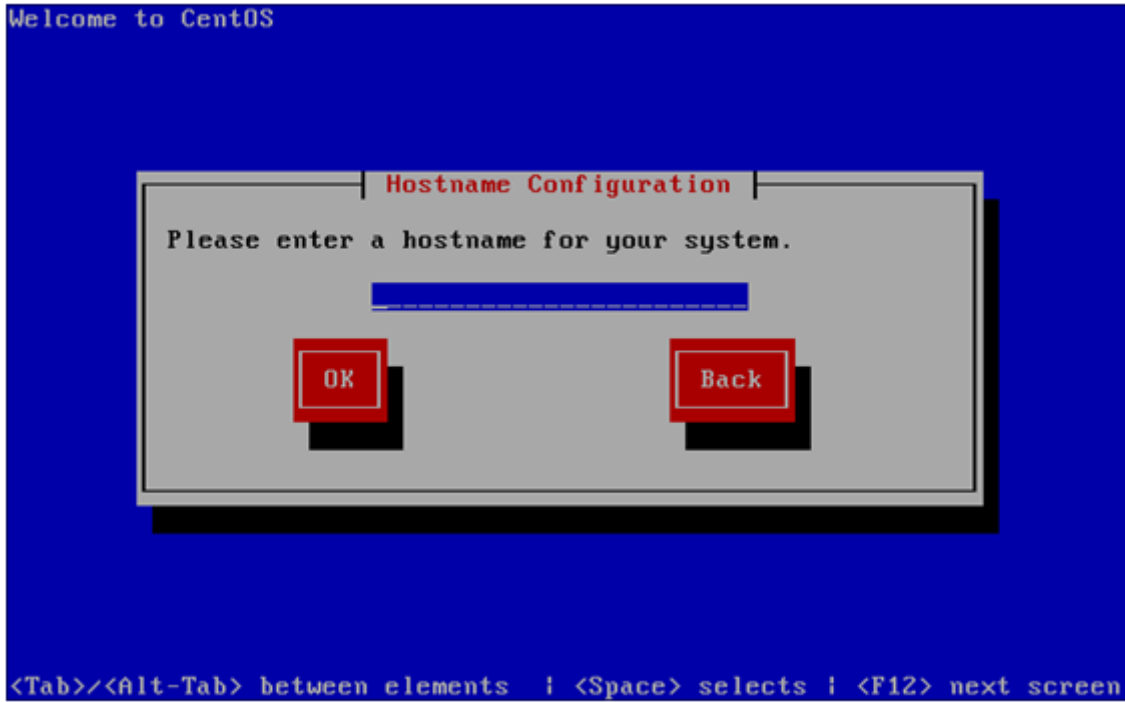


Figure 7: hostname input.

11. Keep waiting till software is installed and following screen appears:

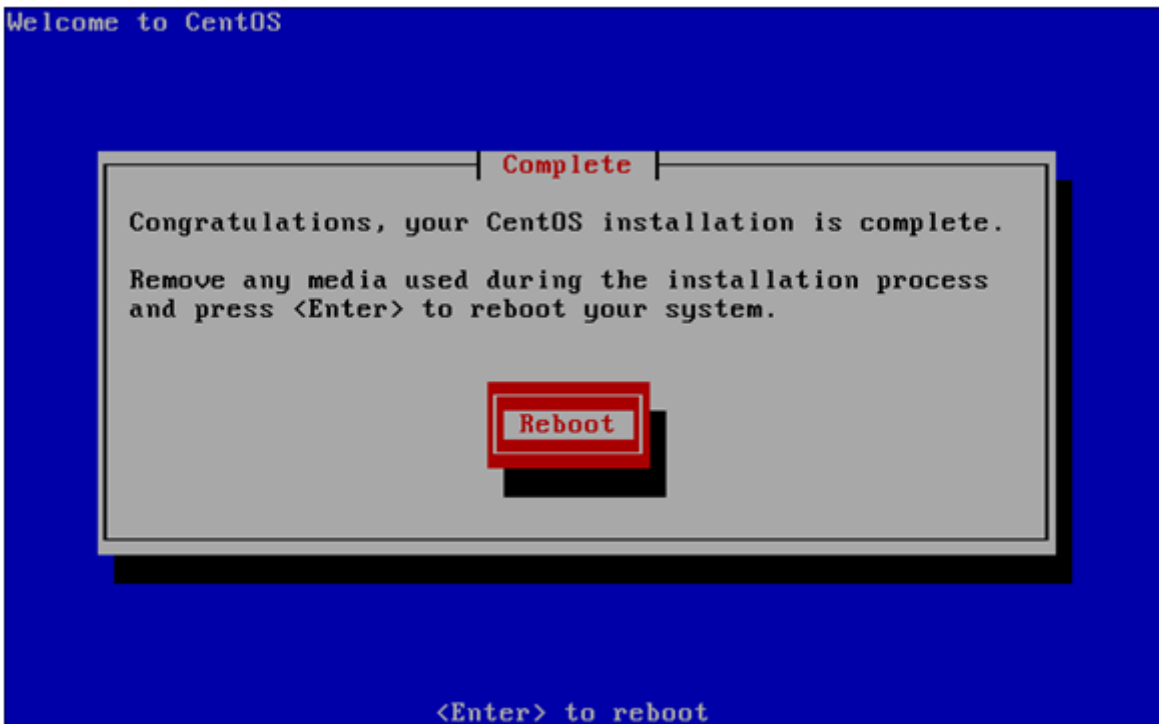


Figure 8: installation complete.

12. Remove CD.

13. Press **Reboot** button.
14. Configure BIOS to boot Measuring Device from Hard Disk drive as described below:
 - a. On boot, before you hear the typical starting signal of processor, keep hitting **DEL** to enter **BIOS Setup**.
 - b. In menu on screen, enter the **Advanced BIOS Features** section.
 - c. Set **SATA (IDE):<hard drive model>** as **1st Drive** in **Hard Disk Drive Priority** list and then set **SATA (IDE):<hard drive model>** as **1st Boot Device**.
 - d. Save results and exit BIOS.
15. Measuring Device will boot from Hard Disk drive.

Note! Described steps are applicable for American Megatrends BIOS setup. If you have other manufacturer's BIOS, please refer to BIOS User Manual

3.2. To install software from USB flash drive

1. Attach monitor and keyboard to the Measuring Device.
2. Attach USB flash drive to the Measuring Device.
3. Turn on the Measuring Device.
4. Configure BIOS to boot Measuring Device from USB flash drive as described below:
 - a. On boot, before you hear the typical starting signal of processor, keep hitting **DEL** to enter **BIOS Setup**.
 - b. In menu on screen, enter the **Advanced BIOS Features** section.
 - c. Set **USB flash drive** as 1st Boot Device:
 - i. USB flash drive can be detected as Removable Device (will appear in **Removable Device Priority** list) – set **Removable Device** as **1st Boot Device** in this case.
 - ii. USB flash drive can be detected as Hard Disk Drive (will appear in **Hard Disk Drive Priority** list) – set **USB:<flash drive model>** as **1st Drive** in **Hard Disk Drive Priority** list and then set **USB:<flash drive model>** as **1st Boot Device** in this case.
 - d. Save results and exit BIOS.

Note! For some hardware it's sufficient to hold **F12** after power up to invoke the Boot menu and select "USB-HDD" without entering BIOS setup. Refer to your hardware vendor's documentation for more information about your specific hardware options.

5. Unit will boot from USB flash drive
6. Depending on USB flash drive type, following error message can appear for some USB flash drives (Figure 9). Do not make any changes and press Ok on this screen:

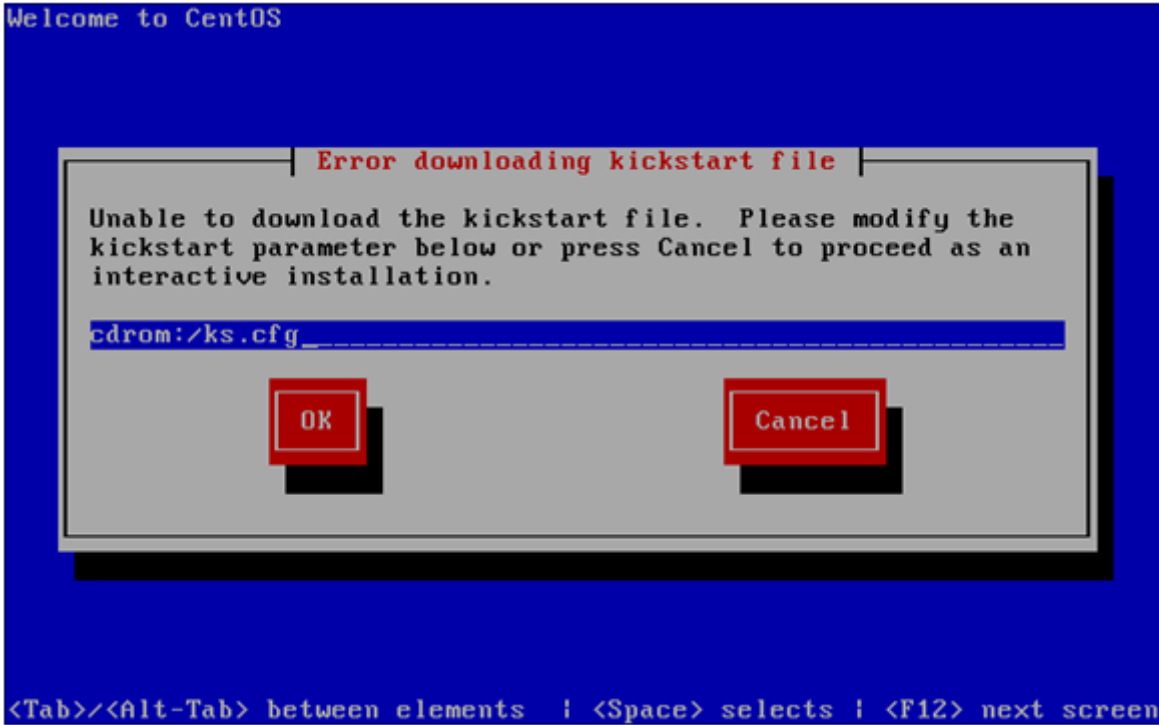


Figure 9: kickstart file error.

If pressing Ok doesn't have any effect, restart Measuring Device, enter BIOS setup, set the Integrated Peripherals ->PCH SATA (IDE) Control mode to "[AHCI]" and try again (the pass to PCH SATA (IDE) Control mode setting could differ depending on your BIOS specifications, please refer to BIOS manual for details).

7. Keep waiting till following screen appears and press Ok (Figure 10)

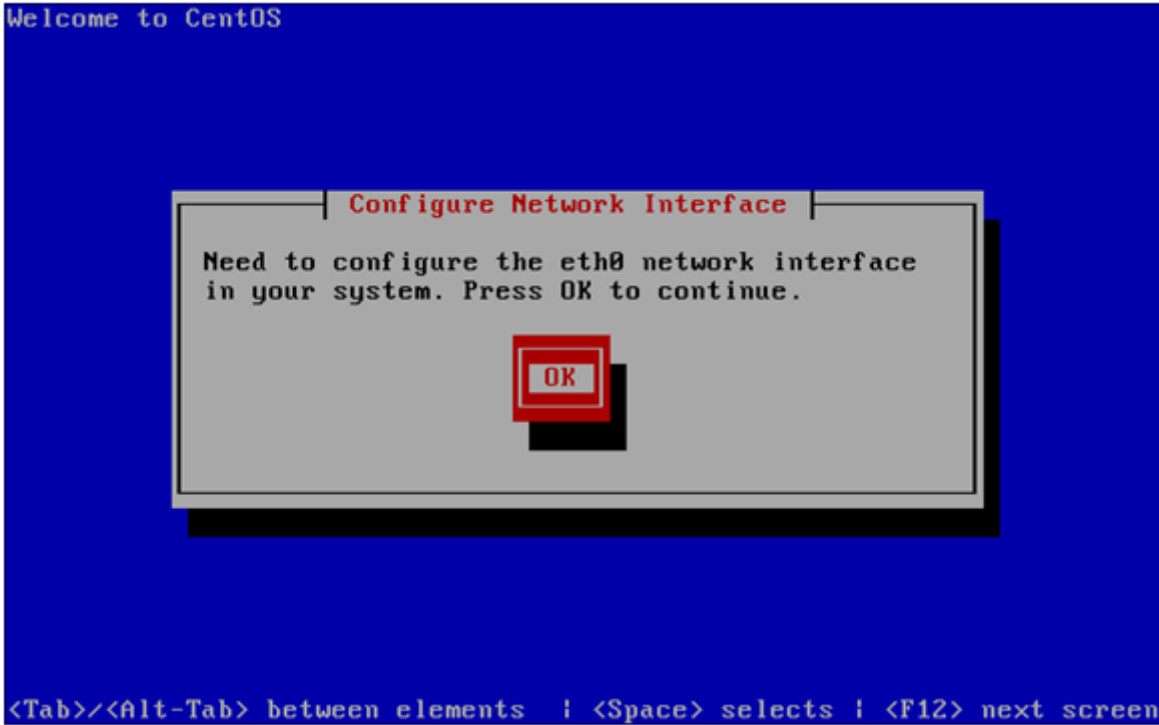


Figure 10: network parameters configuration request.

8. Enter Measuring Device's IP address and Netmask, received from your network administrator, and press Ok on the next screen:

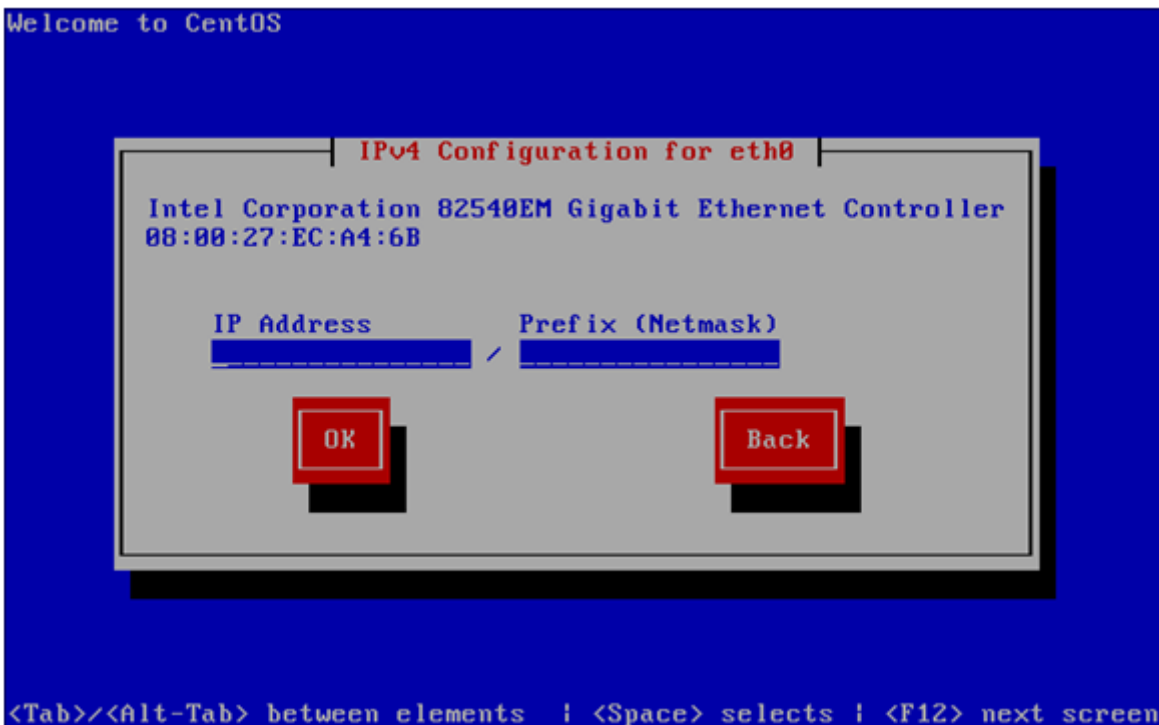


Figure 11: IP address/Netmask input.

9. Enter Measuring Device's Gateway and DNS, received from your network administrator, and press Ok on the next screen:

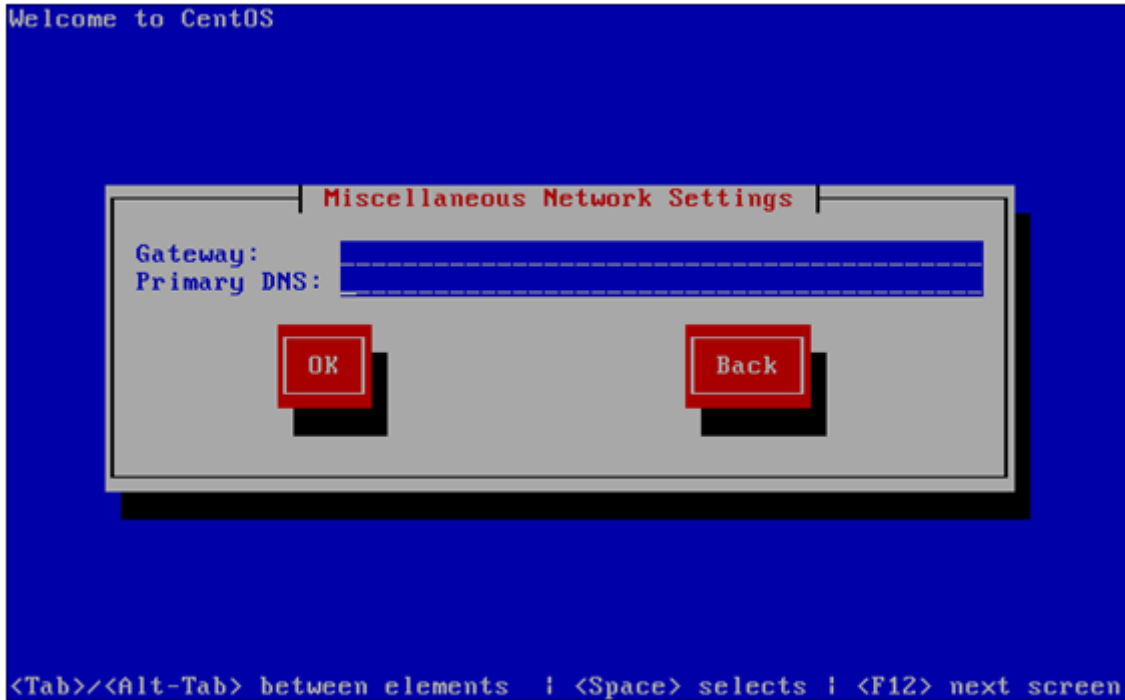


Figure 12: gateway/DNS input.

10. Leave default or change at your option Measuring Device's Host name and press Ok on the next screen:

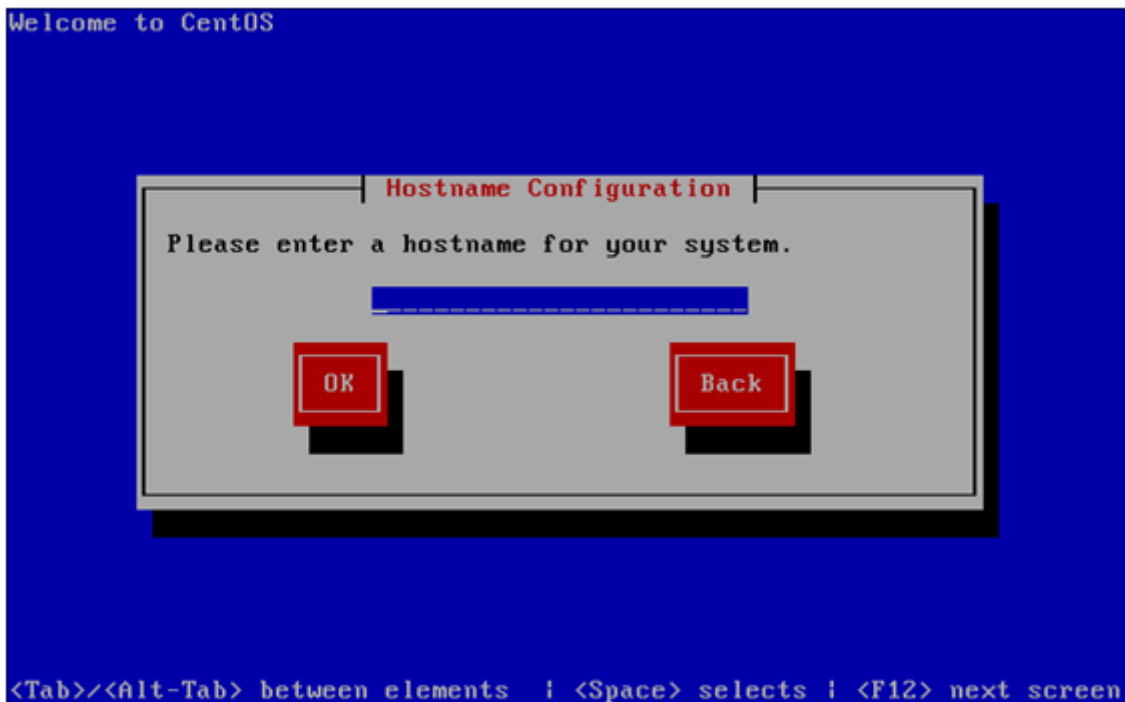


Figure 13: hostname input.

11. Keep waiting till software is installed and following screen appears:

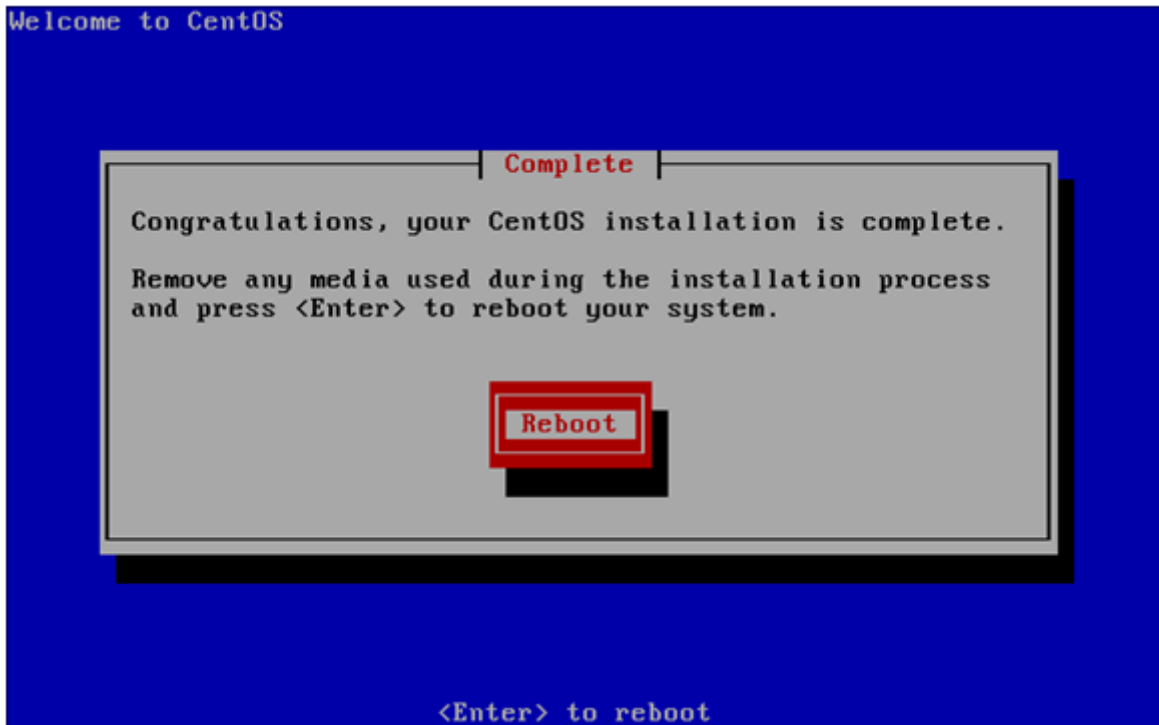


Figure 14: installation complete.

12. Disconnect USB flash drive.
13. Press **Reboot** button.
14. Configure BIOS to boot Measuring Device from Hard Disk drive as described below:
 - a. On boot, before you hear the typical starting signal of processor, hit **DEL** to enter **BIOS Setup**.
 - b. In menu on screen, enter the **Advanced BIOS Features** section.
 - c. Set **SATA (IDE):<hard drive model>** as **1st Drive** in **Hard Disk Drive Priority** list and then set **SATA (IDE):<hard drive model>** as **1st Boot Device**.
 - d. Save results and exit BIOS.
15. Measuring Device will boot from Hard Disk drive.

Note! Described steps are applicable for American Megatrends BIOS setup. If you have other manufacturer's BIOS, please refer to BIOS User Manual

4. Measuring Device mounting

When selecting location for your Measuring Device, please make sure it is mounted in a safe place where:

- it cannot be damaged mechanically, by any leaking fluids or other means (refer to the hardware vendors' documentation to find out the allowable operation conditions);
- cannot be accessed by unauthorized people;
- has appropriate and robust power supply and Ethernet access;

- to be connected with USB camera, the Measuring Device should be mounted so that camera's wire must not be longer than 15 feet (otherwise USB 2.0 cable extender could be used).

5. Camera positioning

To mount camera properly, please consider that virtual people counting cross line is located horizontally on camera's field of view and direction of people traffic must cross this line perpendicularly (see Figure 40 for a sample of camera view). Make sure following conditions are supplied for appropriate camera and application work:

- height of camera. Recommended height of camera mounting is 10-15 feet. To change it, please preserve the image proportion requirements: for proper detection accuracy, object width must be not more than 50% and not less than 10% of the camera preview frame width.

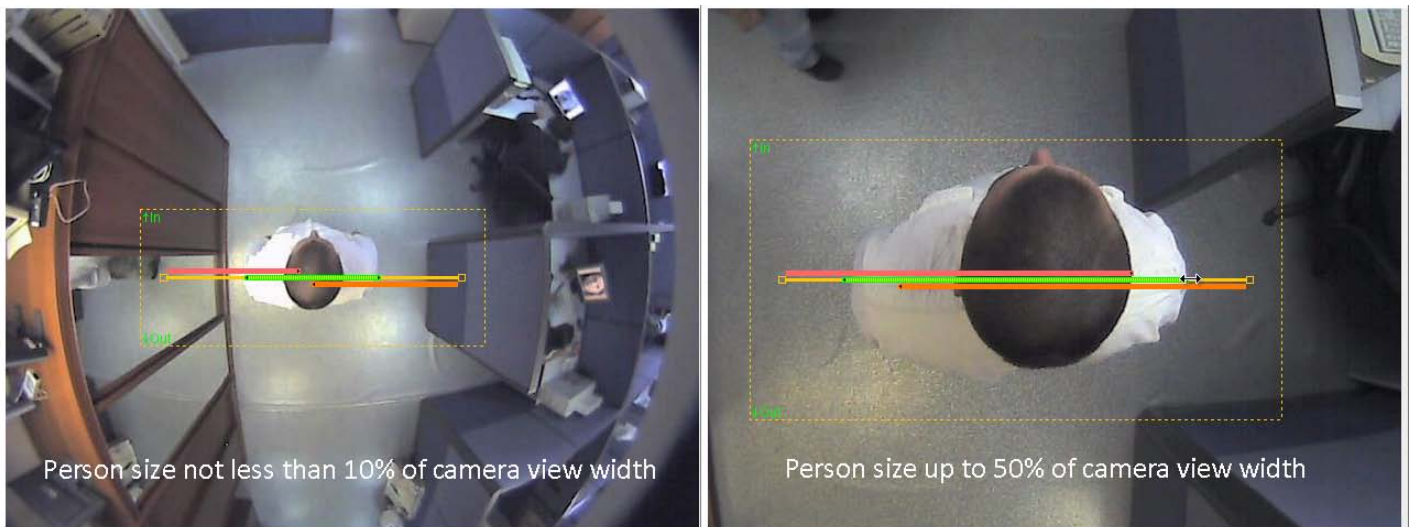


Figure 15: object width preview on count line.

- camera tilt angle. Camera must be mounted straight downwards, looking perpendicularly from the ceiling to the floor of measuring location.
- lighting conditions. Acceptable lighting is the same as required for human eye detection. Direct light flow or low luminosity will impede the detection and affect the accuracy of counting.

6. Measuring Device configuration

6.1. Access to the Measuring Device

When software installation is complete, use your configuration PC to access Measuring Device's web UI via web browser.

1. Open browser window and type IP address of Measuring Device in web browser's address field.

Note! If proxy settings are used in your network, you'll need to add Measuring's IP address to proxy exceptions list: Internet Explorer's menu -> Tools -> Internet Options -> Connections -> LAN settings -> (Proxy server) Advanced -> Exceptions. If Measuring is unavailable but you're confident that network settings specified during installation are valid, give the Measuring 3 minutes to start up.

2. On logon screen (Figure 16), enter the default web UI password – “admin”. For further work we recommend you to change the password, as described in the section 6.5, before starting to use Measuring Device in field.

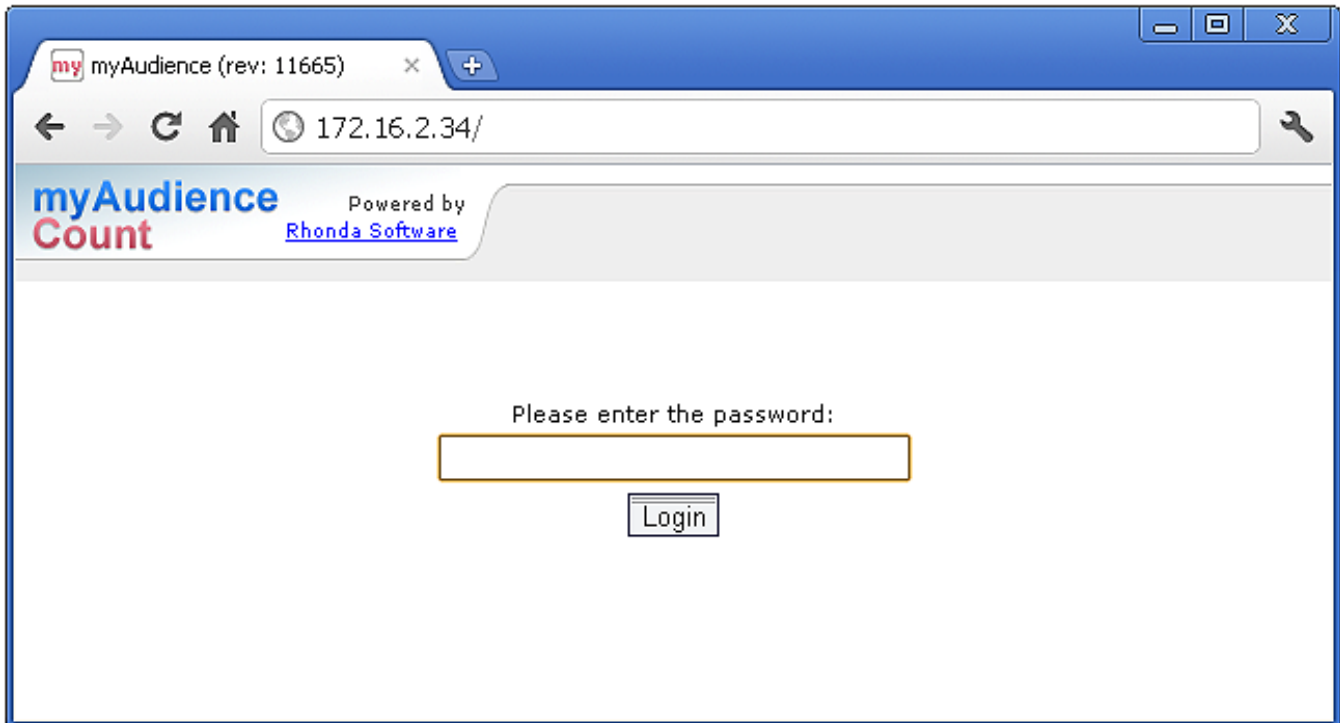


Figure 16: logon screen.

Only one configuration PC can be connected to the Measuring Device at a time; in attempt to access a Measuring Device when any other configuration PC is connected (i.e. another operator is logged on), you'll see the rejection notice (Figure 17).

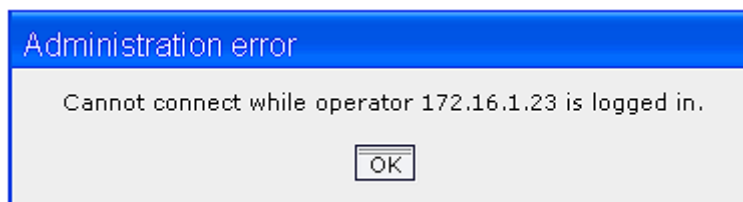


Figure 17: logon rejection notice.

3. To logout from the Measuring Device use the “Logout” link in the upper-right corner of the screen (Figure 18). Automatic logoff starts in 30 minutes if no action with Measuring Device WebUI performed.

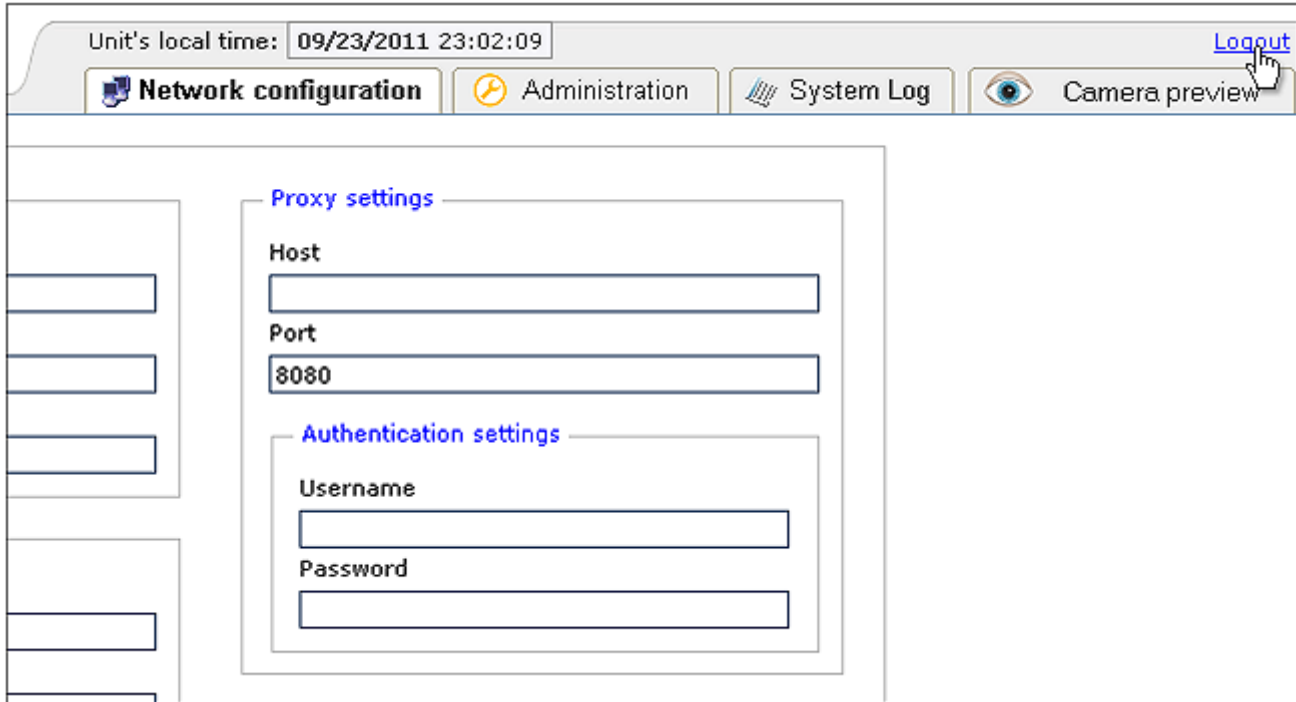


Figure 18: "Logout" link.

6.2. User Interface overview

Measuring Device has a browser-based web interface. The user interface has four tabs:

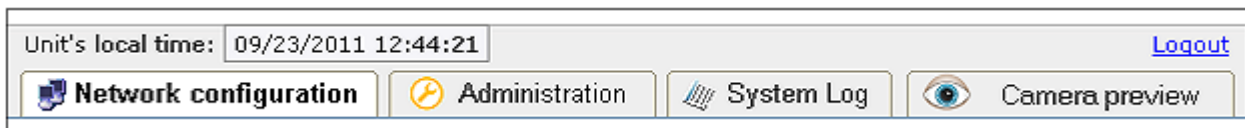


Figure 19: unit's Web UI tabs.

To navigate between tabs, click the desired tab header. It is recommended to apply the settings being edited at the current tab before navigating to another one.

6.3. Network configuration overview

Measuring Device requires Internet connection through LAN Ethernet interface. Basic network settings are requested during the software installation process (see section 2.1). Special adjustments of network configuration will be requested in following cases:

- to get e-mail notifications about important events occurred at your Measuring Device
- to use proxy server
- change network settings
- select the camera type (IP/USB) and set up related parameters

The screenshot displays the "Network configuration" tab in the myAudience Count web interface. The interface includes a header with the logo, "Powered by Rhonda Software", and a local time display of "09/23/2011 12:44:21". Navigation tabs for "Network configuration", "Administration", "System Log", and "Camera preview" are present. The main content area is divided into several sections:

- IP settings:** IP address (172.16.2.34), Subnet mask (255.255.0.0), Gateway (172.16.0.1).
- SMTP settings:** SMTP server (myaudience.com), SMTP port (25), Mailfrom address (user@myaudience.com), Recipient address (user@myaudience.com).
- Proxy settings:** Host, Port (8080), and Authentication settings (Username, Password).
- Camera configuration:** Selection between USB camera and IP camera (selected), IP address (172.16.2.125), Manufacturer (IQeye), and Streaming address.
- Other settings:** DNS server (172.16.0.51), Host name (MU-172-16-2-3-Viv).

Buttons for "Defaults", "Cancel", and "Apply" are located at the bottom of the configuration area. Below the configuration area, a "Test connection to portal" button is shown next to a green checkmark icon and the text "Last updated: 09/23/2011 12:43:13".

Figure 20: "Network configuration" tab.

Refer to the section 6.4 for more information.

Note! If Measuring Device is moved to another Ethernet segment, make sure appropriate network settings are provided. Incorrect settings will block access to the Measuring Device. Please contact your network administrator for proper network settings.

6.4. Network settings

To view/edit Measuring Device's network settings open "Network configuration" tab (Figure 20).

Please use network information received from your network administrator (as described in section 2.1) to proceed with network settings.

The settings are being validated in course of input: unless all specified settings are valid, the whole settings' bundle cannot be applied.

Field's names with invalid input will be marked red:

IP address
172.16.2.

Figure 21: invalid field indicator (field name is colored red).

All mandatory settings related to a Measuring Device are marked bold:

Host name
MU-172-16-2-45

Figure 22: mandatory field indicator (field name is marked with bold font).

Some fields that are not mandatory by default will be required for completion if special fields in a group are entered. Sample cases are indicated below:

1. To receive notifications on important events occurring at your Measuring Device (see section 6.6 for samples of event types), specify the settings located at the "SMTP settings" panel:
 - SMTP server's domain name or IP address
 - SMTP port (25 by default)
 - an address e-mail notifications to be originated from ("Mailfrom address")
 - an address for e-mail notifications to be sent to ("Recipient address")

Note! "Mailfrom address" field is required to pass mail filters that could block system notifications. It is suggested to use the same address for Mailfrom as for Recipient's address field.

If your SMTP server relays e-mail messages from anonymous senders leave username/password blank or check "use encrypted connection" checkmark if your SMTP server supports SSL/TLS and you wish to enable this capability (Figure 23).

SMTP settings

SMTP server

SMTP port

Mailfrom address

Recipient address

Authentication settings

Username

Password

Use encrypted connection

Figure 23: SMTP settings.

2. Specify proxy setting if needed to connect to the Internet (Figure 24). Please contact your network administrator to find out appropriate settings' values.

Proxy settings

Host

Port

Authentication settings

Username

Password

Figure 24: proxy settings.

Camera configuration

USB camera IP camera

Power line frequency filter

Disabled

Camera configuration

USB camera IP camera

IP address **Manufacturer**

172.16.2.125 IQeye

Streaming address

Figure 25: camera settings.

3. Select the type of camera connected to your Measuring Device. Check USB or IP camera in “Camera configuration” settings. For IP camera, select camera manufacturer from the list and specify the IP address obtained from your network administrator as described in section 2.1. If manufacturer is not included in suggested list, select “Other” in this field and fill in the streaming address for IP camera (Figure 25).

To find streaming address for IP camera refer to the camera manufacturer's user manual. Make sure that camera supports MJPEG streaming format. Find MJPEG streaming address for your camera in manual and fill it in the corresponding field of Camera configuration section (Figure 25). If streaming address is not listed in the camera manual, please inquire the manufacturer directly to provide you the streaming address.

To save settings, press “Apply”. If you have changed the IP address of the Measuring Device, re-connect to the Measuring Device to continue working with it. After settings saving, previous values will be lost (and cannot be restored).

Other settings

DNS server

172.16.0.51

Host name

MU-172-16-2-3-Viv

Defaults Cancel Apply

Figure 26: network settings acceptance.

To cancel the modifications of the unsaved settings and roll back to the previous values, press the "Cancel" button. Navigating away from the "Network configuration tab" has the same effect (Figure 26).

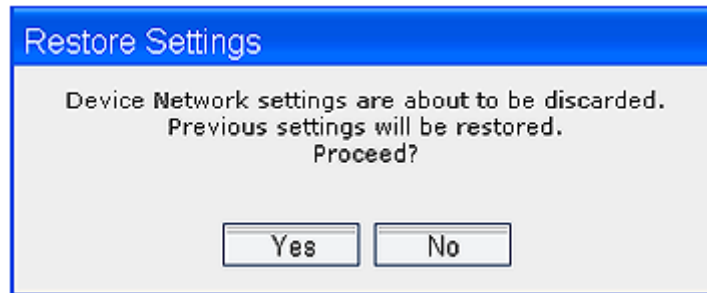


Figure 27: warning on network settings changes.

To reset settings to their default values press the "Defaults" button. Fields will be filled in with default data. To save settings press "Apply" button, to cancel settings press "Cancel" button correspondingly.

4. Portal connection status icon in the bottom center of the "Network settings" tab shows the current status of connection to Reports Portal (Figure 28)



- "Connection OK"



- "Connection error"



- "Indeterminate"

If you see the red indicator of "Connection error" check following setting to fix the problem and establish connection with Reports Portal:

- unit Internet connection is available,
- proxy server settings are entered correctly,
- DNS address is entered correctly.

The connection status is being checked periodically. To check it manually, press the "Test connection to portal" button.



Figure 28: "Test connection to portal" button and connection status indicator.

6.5. Device administration

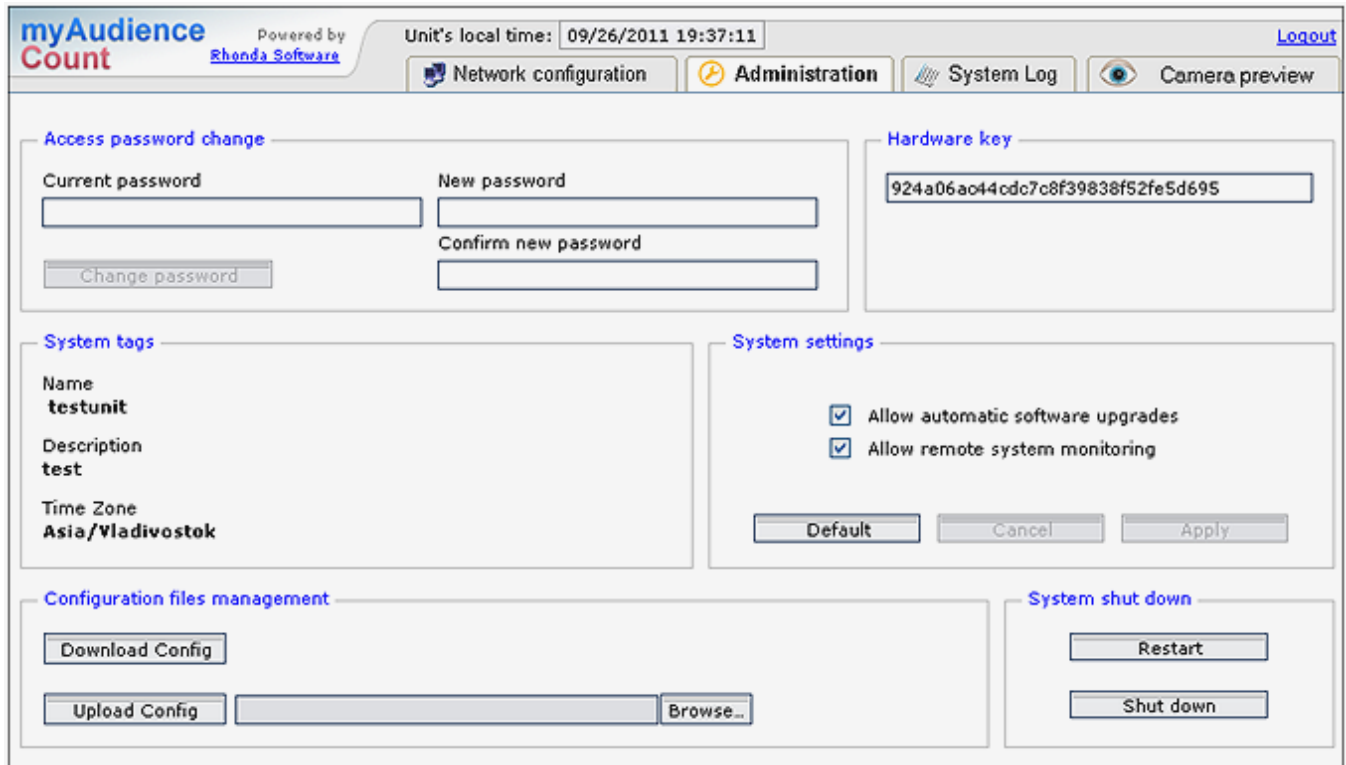


Figure 29: "Administration" tab.

1. To change the password of configuration access (default "admin") go to "Access password change" section in the upper-left corner of "Administration" tab (Figure 29). Enter the current password, type and confirm a new one and press "Change password" button (Figure 30).

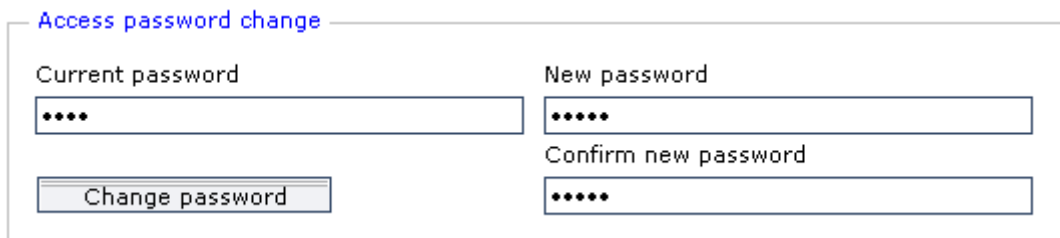


Figure 30: access password change.

2. "Hardware key section" in the upper right of the page contains the unique number of your Measuring Device hardware, required to complete its registration at the Reports Portal (refer to section 7.3). This number is displayed automatically.

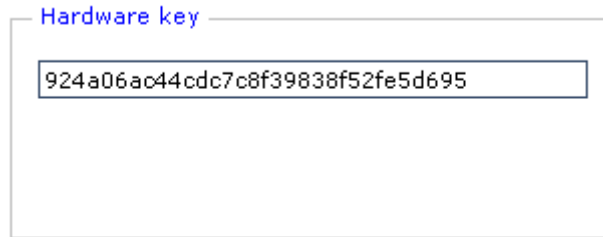


Figure 31: unit's hardware key.

3. "System tags" are filled in automatically, when Measuring Device is registered at the Reports Portal (i.e. when Measuring Unit is added). Tags contain the Measuring Unit name, description and time zone details (please refer for details to section 7.3.1)

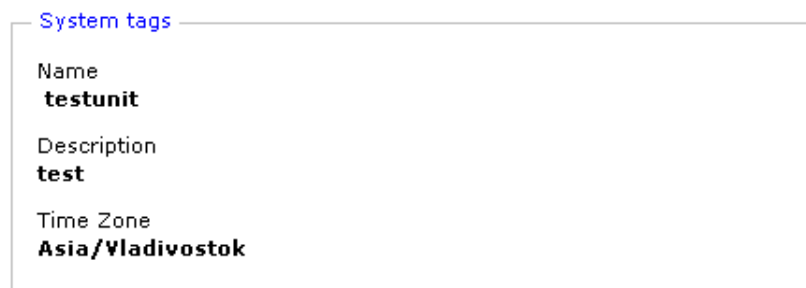


Figure 32: system tags at the unit.

4. "System settings" section offers options for automatic upgrades and remote monitoring control. By default myAudience-Count has remote software upgrade capabilities enabled. If you wish to disable the software upgrades (not recommended) uncheck the corresponding box. Same is applicable for the remote Measuring Device monitoring. By default it is enabled for the purpose of remote troubleshooting by production support staff and can be disabled at your option (Figure 33).

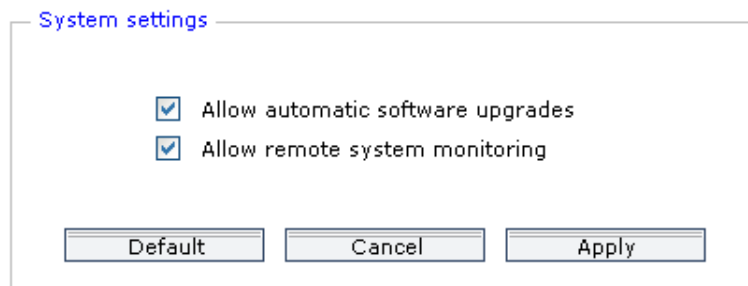


Figure 33: automatic upgrades and remote monitoring configuration.

5. "System shut down" control is located in the lower right corner section (Figure 34). To power down or restart the Measuring Device, press the corresponding button.

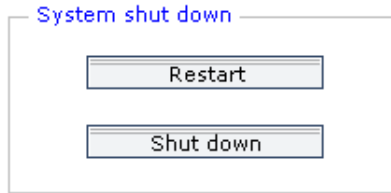


Figure 34: system restart/shutdown buttons.

To complete the configuration, you need to register Measuring Device at the Reports Portal as described further in section 7.

6.5.1. Hardware configuration for Measuring Device replacement

This option will help you adjust Measuring Device if your current hardware is working improperly and needs to be replaced. It is also applicable if you plan to install few Measuring Devices and will help you automate part of the configuration work.

To save your configuration settings please follow the next steps:

1. Access the Web UI (see section 6.1) and open the "Administration" tab.
2. Select the "Download config" button and download configuration file to your computer.



Figure 35: "Download config" and "Upload config" buttons.

Saving configuration files is optional: instead of downloading/uploading the config files you can configure the Measuring Device manually as described in section 6.

Note! If you wish to download and store your Measuring Devices' configuration files in advance for backup purposes, don't forget to re-download them once you update the Measuring Devices' configuration.

Note! No passwords used for Measuring Device (access password, proxy password, SMTP password) are included into the downloadable/uploadable configuration files, therefore the mentioned passwords will remain the same as were before configuration file upload. Make sure to manually specify the desired values for mentioned passwords upon configuration file upload.

To upload configuration settings to new hardware follow next steps:

1. Access the "new" Measuring Device and open the "Administration" tab.
2. Select the "Upload config" button and upload configuration file stored as described earlier in this section.
3. Get the "new" Measuring Device's hardware key at the "Administration" tab of configuration UI (see section 6.5).

4. Access the Reports Portal and go to the "Groups & Units" tab
<http://portal.myaudience.com/units.php>
5. Find in the list of Measuring Units the record related to physical Measuring Device which hardware key you've copied.
6. Press the "Edit" button next to the selected Measuring Unit's name in the list.
7. Enter the "Hardware ID" obtained at step 5 and accept changes to the edited Measuring Unit.

6.6. System log report

Display on page (1-500)

Log management

Show events occurred in the period (mm/dd/yyyy hh:mm:ss): -

Critical Informational

Event log

[next](#)

Date	Time	Severity	Events occurred within the (09/26/2011 22:39:05) - (09/27/2011 09:28:18)
09/27/2011	09:28:18.349	Informational	172.16.1.245 logged on the device.
09/27/2011	09:26:36.799	Informational	172.16.1.245 logged on the device.
09/27/2011	09:25:23.365	Informational	172.16.1.245 logged on the device.
09/26/2011	23:49:03.296	Critical	System operates properly.
09/26/2011	23:49:03.278	Critical	Measurement data transfer is up to date.
09/26/2011	23:49:03.275	Critical	Network connectivity available.
09/26/2011	23:44:37.882	Critical	Unstable network connectivity.
09/26/2011	23:40:00.281	Critical	Unstable network connectivity.
09/26/2011	23:35:11.014	Critical	Unstable network connectivity.
09/26/2011	23:30:19.972	Critical	Unstable network connectivity.
09/26/2011	23:25:05.966	Critical	Unstable network connectivity.
09/26/2011	23:19:55.878	Critical	Unstable network connectivity.
09/26/2011	23:15:02.987	Critical	Unstable network connectivity.
09/26/2011	23:09:08.497	Critical	Unstable network connectivity.
09/26/2011	23:04:07.422	Critical	Unstable network connectivity.
09/26/2011	22:59:07.443	Critical	Unstable network connectivity.
09/26/2011	22:54:06.448	Critical	Unstable network connectivity.
09/26/2011	22:49:06.443	Critical	Unstable network connectivity.
09/26/2011	22:44:06.060	Critical	Unstable network connectivity.
09/26/2011	22:39:05.828	Critical	Unstable network connectivity.

[prev](#)

Figure 36: "System log" tab.

Important system events associated with a specific Measuring Device are registered in the device's system event log list available at the "System log" tab (Figure 36). Such events include, but not limited to:

- System start up notification
- Device logging notification
- Network connectivity status information
- Settings update notification
- Data transfer status reports

Events are listed in the table in the time descending order. Use navigation links to view newer or older entries.

Event log

next

Date	Time
09/27/2011	09:28:18.349
09/27/2011	09:26:36.799
09/27/2011	09:25:23.365
09/26/2011	23:49:03.296
09/26/2011	23:49:03.278
09/26/2011	23:49:03.275
09/26/2011	23:44:37.882
09/26/2011	23:40:00.281
09/26/2011	23:35:11.014
09/26/2011	23:30:19.972

prev

Figure 37: system log navigation links.

- Log entries can be filtered in two ways in “Log management” section (Figure 38).
 - Event severity: all events which could affect data gathering/transmission are “Critical” and potentially require your actions for fixing hardware malfunction, or other issues. “Informational” events are minor and provided for informational purposes only.
 - Time interval: you can specify the date/time range to filter all events occurred within this interval. If the period start point field left blank, by default it captures the date of the earliest data logs available. Blank end period field will capture the latest available information up to the current time.

Note! Date/time must be specified in “mm/dd/yyyy hh:mm:ss” format where the date part is required to be fully specified while time part is optional.

- To apply filter(s) specify necessary parameters and press the “Apply filter” button. “Reset filter” button discards all currently enabled filters.

Show events occurred in the period (mm/dd/yyyy hh:mm:ss): 09/20/2011 05:00 - 09/27/2011 22:00

Critical Informational

Figure 38: log filtering controls.

- To export log events in *.csv format press “Export log” button and download it to your computer. If filters were applied while viewing logs on Configuration UI, they will remain valid for exported data as well. “Clear log” button erases all your system log entries currently stored.

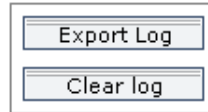


Figure 39: log export/clear controls.

If the situation is critical and data gathering/transmission is under the threat of system error, the system will send an e-mail notification to the e-mail address provided in the “Network configuration” tab.

6.7. Camera preview access

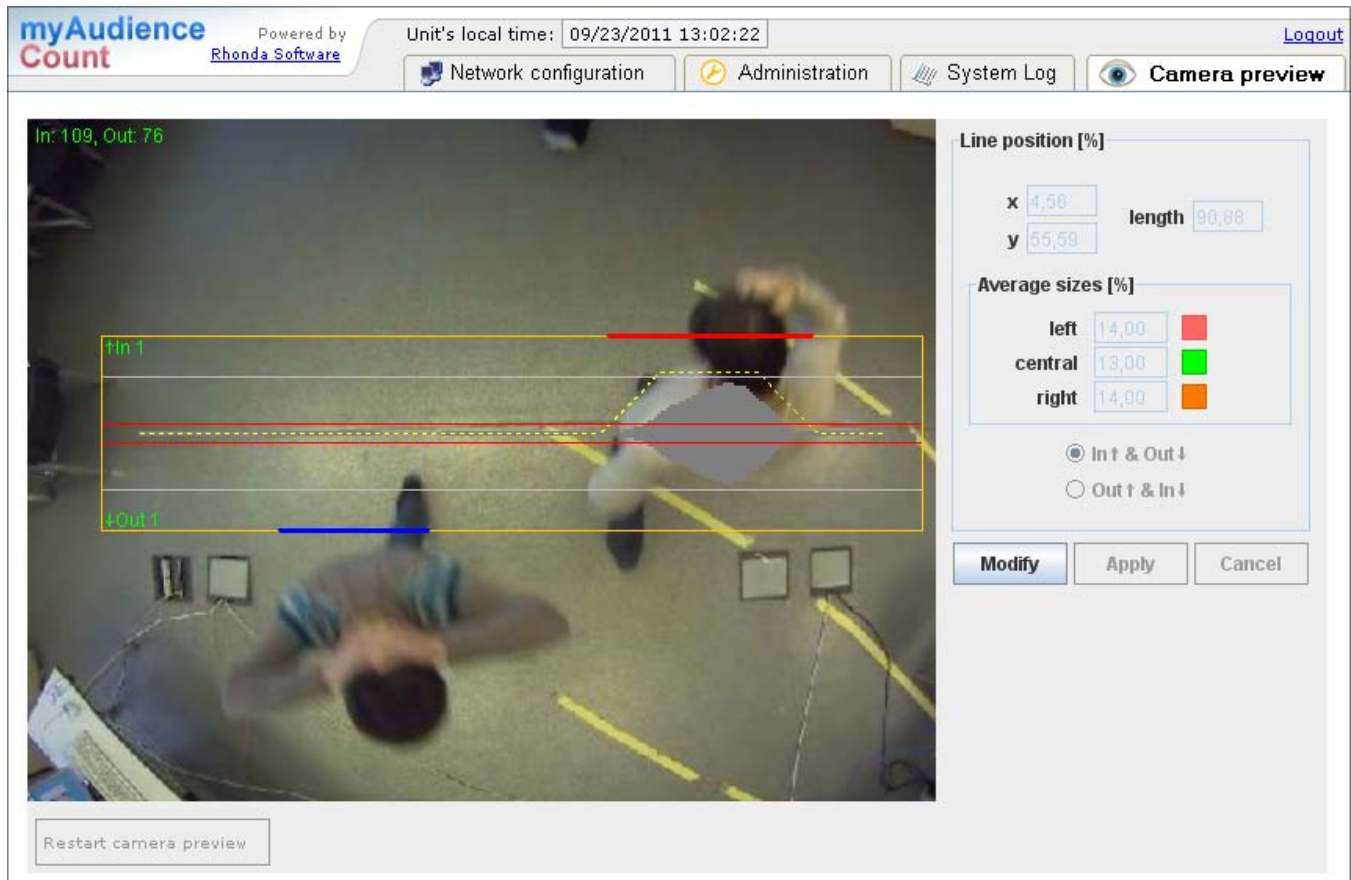


Figure 40: camera preview.

Note! It is highly important to calibrate camera (refer to section 6.8) to receive accurate people counting result.

Open the “Camera preview” tab (Figure 40) and make sure that live picture from the camera is displayed. Check that camera is mounted correctly (see instructions in section 5) and People counting line crosses the measuring area in a right place.

If you don't see a live picture from camera in the camera preview tab and you're confident that your camera is connected, turned on and working properly, go to www.java.com/getjava/, download and install Java package to configuration PC. To ensure that your Java package is installed correctly and working, visit <http://www.java.com/en/download/testjava.jsp> and select “test the currently installed version of Java” link.

6.8. Camera calibration

When the camera's position is finalized, it is highly important to calibrate camera to receive accurate people counting results.

On the camera preview screen you'll see the People counting line, framed with yellow solid border (Figure 41).

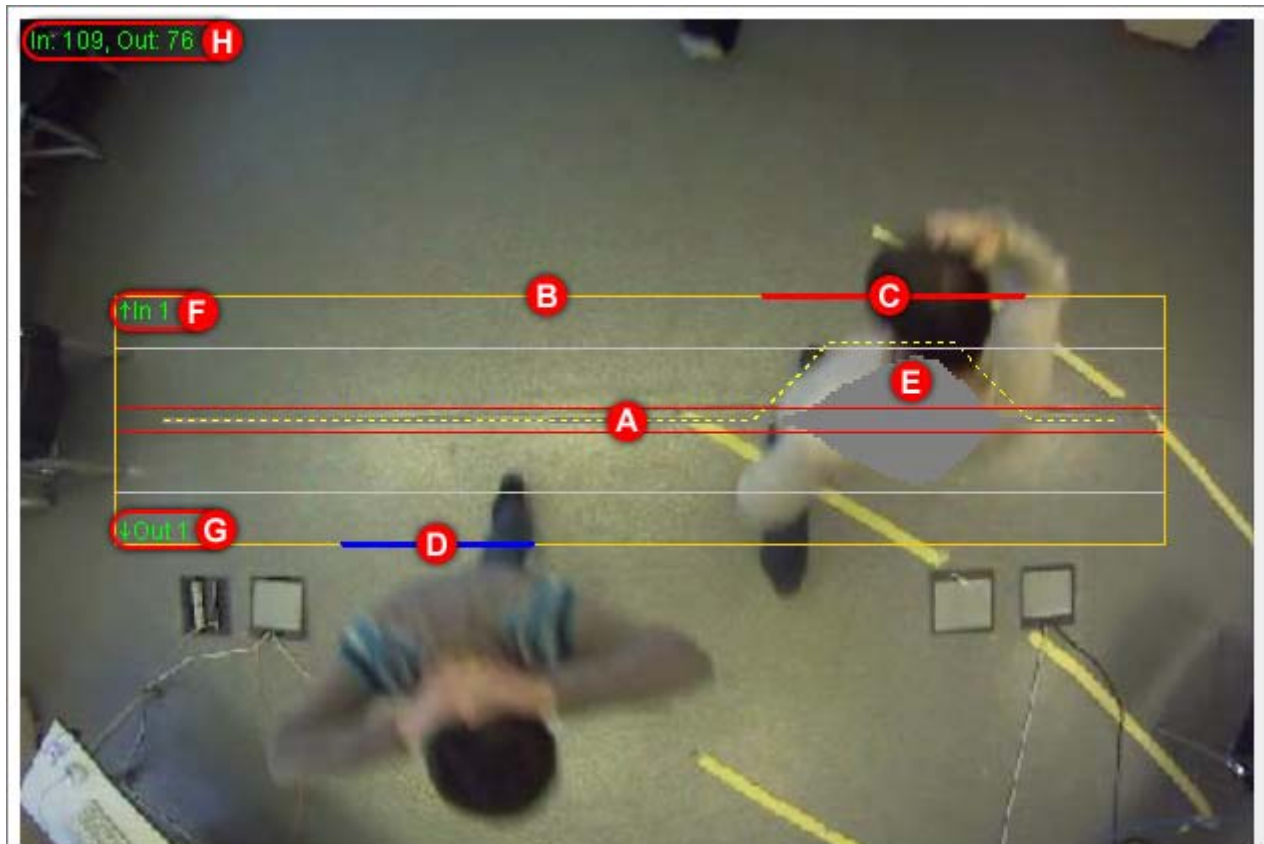


Figure 41: people counting line frame view.

People counting line **A** is a yellow dashed line crossing the frame in the center bordered by two red solid lines.

Yellow frame **B** limits the people traffic detection area. This frame can be adjusted in size and position, always staying within the camera's field of view.

Red **C** and blue **D** segments appearing on the frame border lines visualize the detected event of line crossing: red for entered person and blue for exited.

Visualization of detection event is also marked with dynamic change on People counting line preview **E**.

Traffic direction indicators “In” **F** and “Out” **G** are located in the left part of the frame. Numbers next to the indicators show the last detected exits and entries on camera preview screen.

Total count of exits and entries **H** is located in the left upper corner on camera preview tab.

To adjust the People counting line's parameters press “Modify” button in the right part of the “Camera preview” tab (Figure 42).



Figure 42: count line adjustment buttons.

In “Modify” state People counting line view and color will change (Figure 43).



Figure 43: people counting line view in “Modify” state.

6.8.1. Counting line position and length adjustment

Initially counting line parameters (position, length and calibration) are in default values. To adjust counting line position, drag the yellow solid line **A** (Figure 43).

To change the line length use the handles at the line ends (Figure 44) or specify it changing coordinates of the counting line position controls at the right part of the screen (in % from the camera's field of view width) (Figure 45).

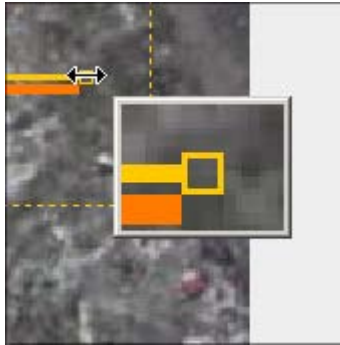


Figure 44: counting line resize handles.

Line position [%]	
x	4,56
y	41,18
length	90,88

Figure 45: counting line position controls.

Note! It is highly important to calibrate camera to receive accurate people counting result.

6.8.2. Counting line calibration

To set the parameters for line-crossing detection you need to scale the average width of person image in ratio to the People counting line's length. Due to the camera overhead view distortion, width of the person will vary depending on her/his position on the line. It usually stretches while shifting from the center to the border of camera's field of view.

Three gauges are used as fine calibrators to measure the possible deviations: **B**, **C**, **D** (Figure 43). You will need person's assistance to adjust settings parameters.

To adjust the average person size for People counting line:

1. Open the camera preview tab on your configuration PC.
2. Press "Modify" button to start editing the people counting cross line parameters.
3. Ask your assistant to stand in the center of the People counting line (Figure 46).
4. Use the central green gauge to measure the width of your assistant image on People counting line.

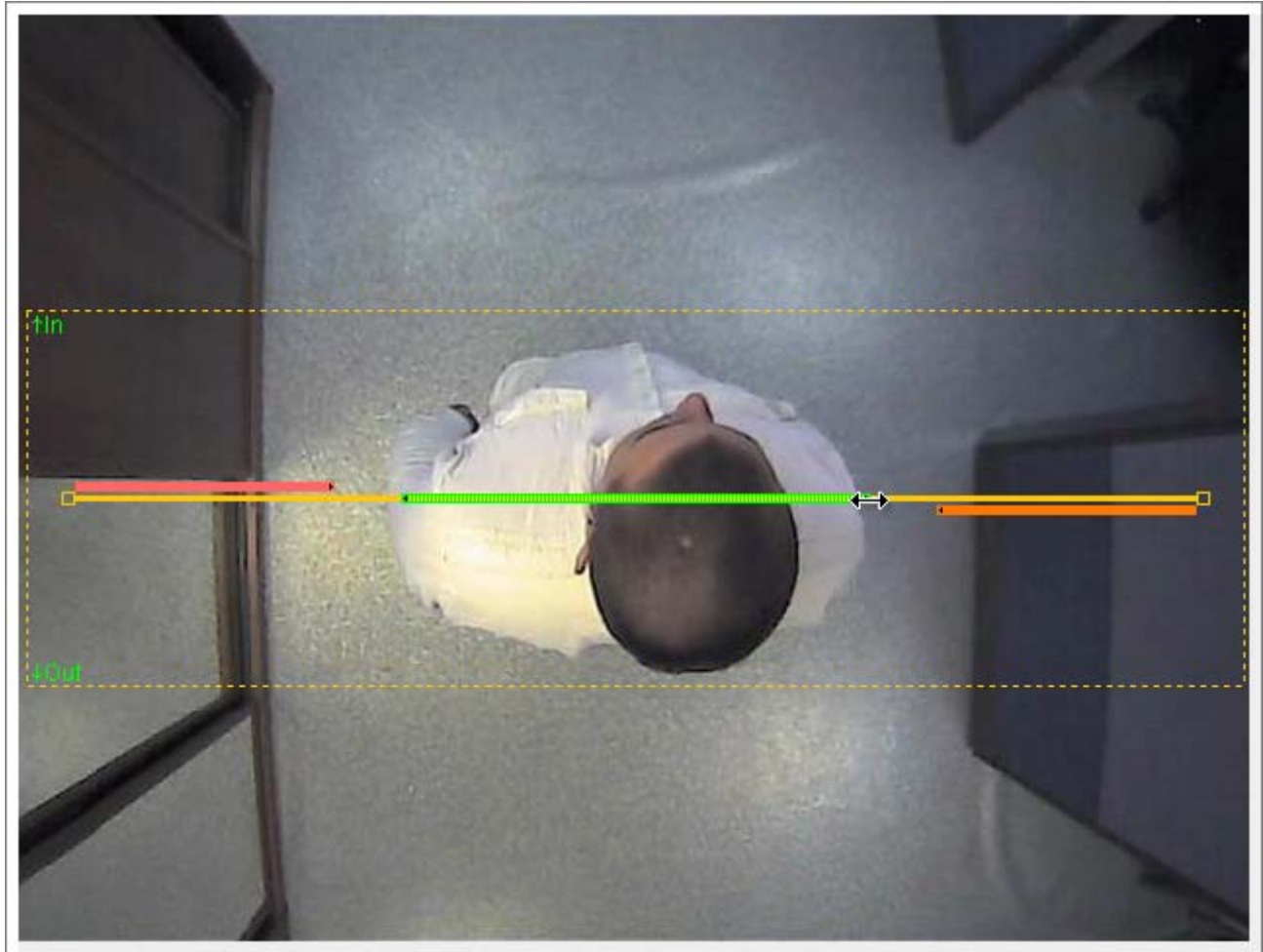


Figure 46: using gauges for people counting line center calibration.

5. Drag the gauge's handles or use the gauges length controls to adjust the size (in % from the camera's field of view width) (Figure 47, Figure 48).

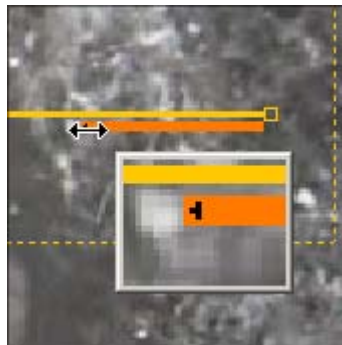


Figure 47: right gauge resize handle.

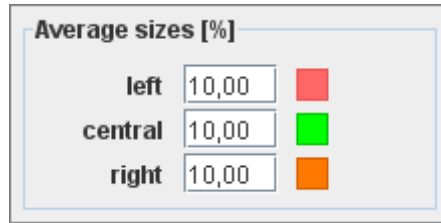


Figure 48: gauges length controls.

6. Ask your assistant to move to the left /right end of the People counting line (Figure 49) and use corresponding gauges to adjust line edges. Red gauge for the left-end position and orange gauge for the right-end position. Adjust their lengths in the same way as you did for the central gauge: drag the gauge's handles or use the gauges length controls to adjust the size (in % from the camera's field of view width).

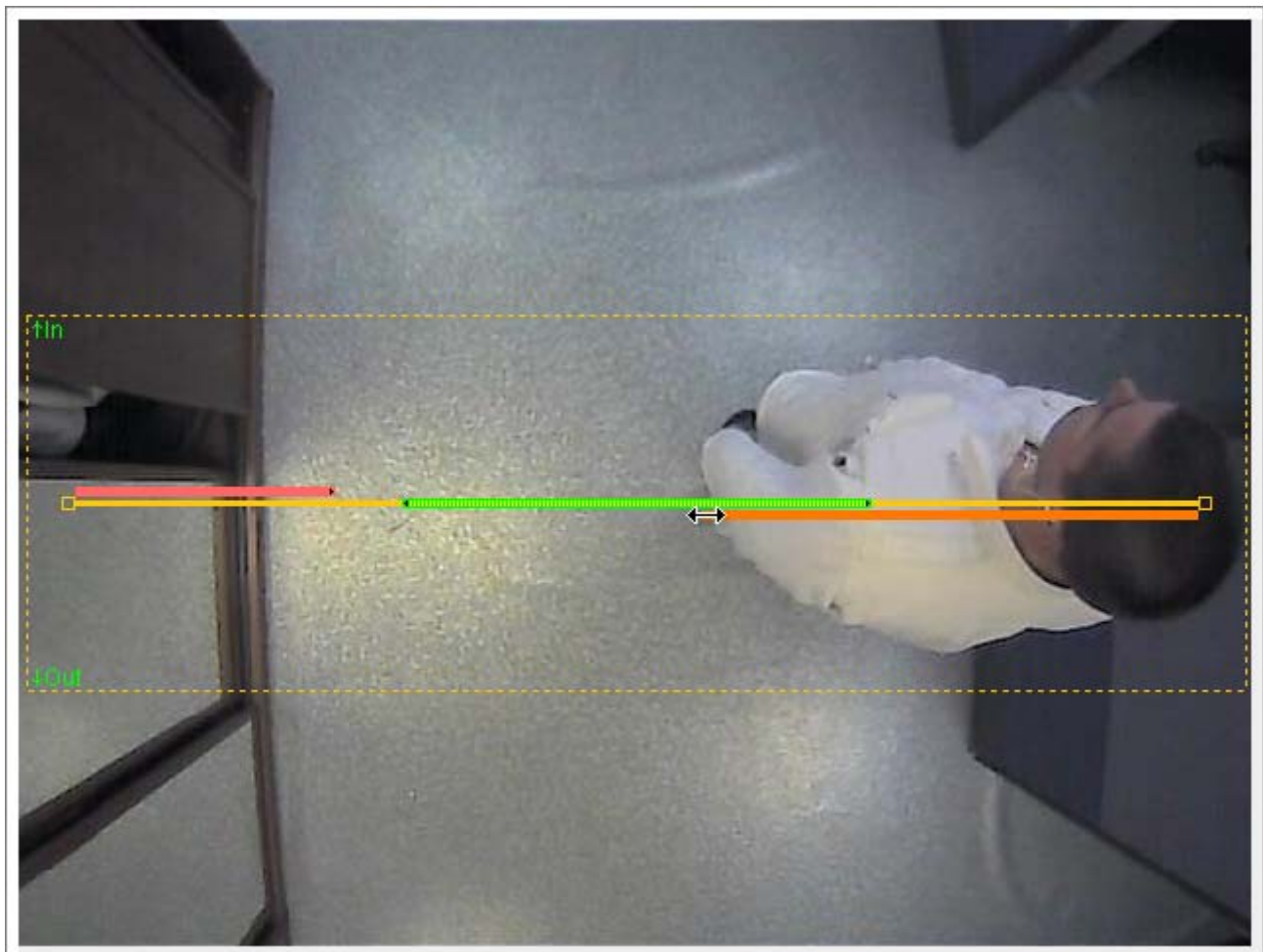


Figure 49: using gauges for people counting line ends calibration.

7. Press "Apply" button to save parameters.

6.8.3. Traffic direction settings

To specify in/out people counting direction use the crossing line direction controls. Traffic direction controls are used to indicate entrance and exit of the location for further counting analysis.

1. Open the camera preview screen on your configuration PC.
2. Press "Modify" button to start settings editing.
3. Select the desired traffic direction using direction control settings (Figure 50).
4. Press "Apply" to save parameters.



Figure 50: crossing line direction controls.

Your choice will be displayed at the camera preview area.



Figure 51: crossing line direction indicators.

Note! Changing the camera's position and zoom or People counting line position will require you to adjust all aforementioned parameters to their respective new values to ensure measurement correctness.

7. Operations with Reports Portal

7.1. Reports Portal overview

Reports Portal is a web site where you can manage your Measuring Units, attach licenses you've purchased to Measuring Units you possess and view audience metrics charts based on the information gathered by your Measuring Devices.

Note! Recommended web browser for portal usage is Google Chrome.

To access Reports Portal at <http://portal.myaudience.com/> use any PC with Internet connection and Web browser installed (Google Chrome, Firefox, MS IE 8.0+). Use the same login and password you've been registered with at <http://www.myaudience.com/> to access your account on the Reports Portal.

Reports Portal's User Interface is divided into five tabs which are used for navigation purposes: to reach the certain tab click the corresponding header.

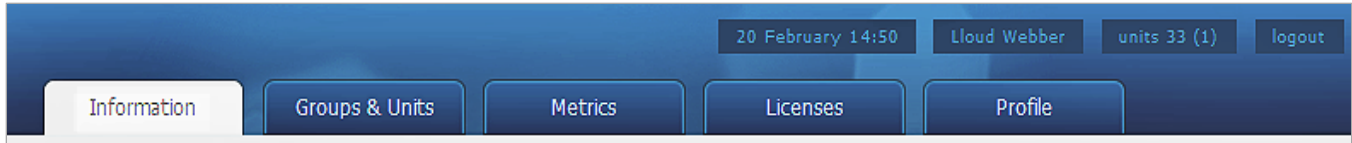


Figure 52: Reports Portal UI tabs.

7.2. User Profile

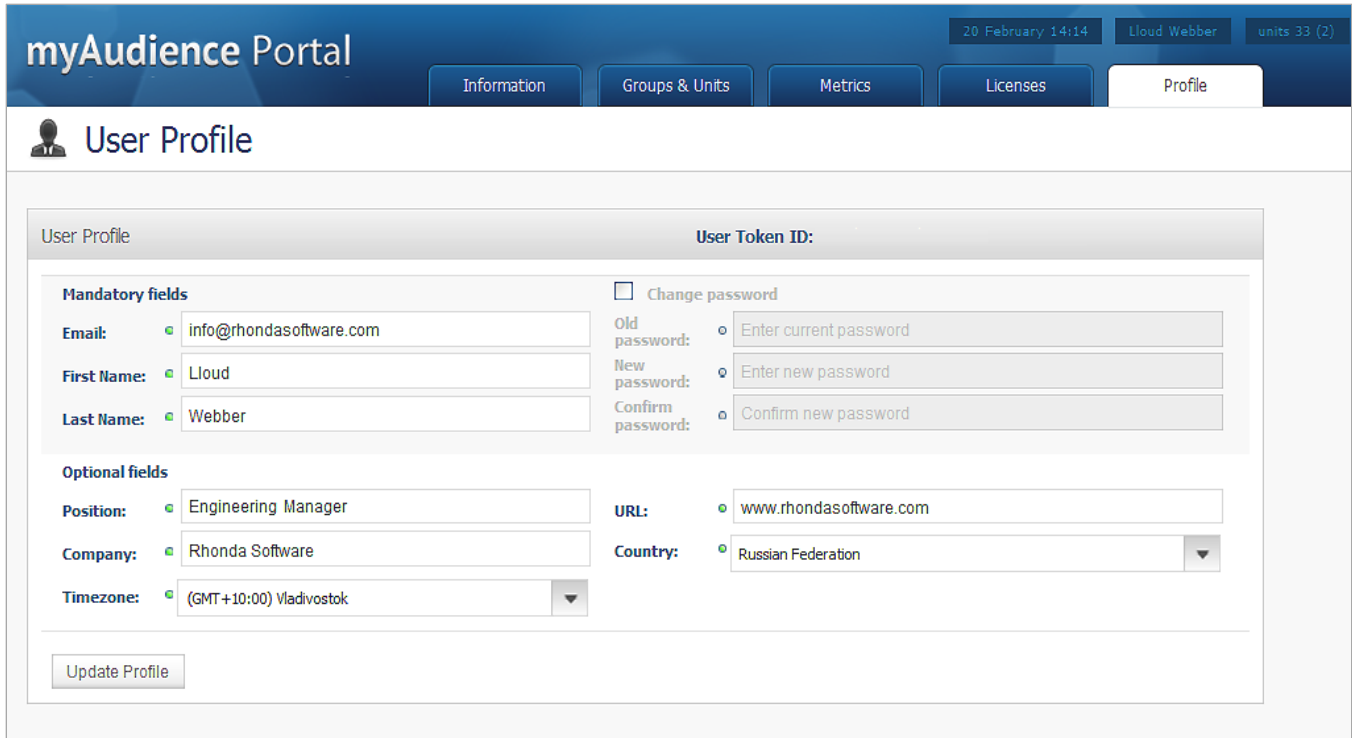


Figure 53: user's profile at the Reports Portal.

When accessing the Reports Portal for the first time, fill in your details at the “Profile” tab (Figure 53).

7.3. Measuring Device registration

To start gathering data and calculating metrics, you need to register Measuring Device at the Reports Portal with a valid myAudience-Count license number.

Prior to Measuring Device registration, prepare following information:

1. Measuring Device’s hardware key: log on the Measuring Device configuration web UI (see section 6.1 for log on instructions) and find it at the “Administration” tab (Figure 54).

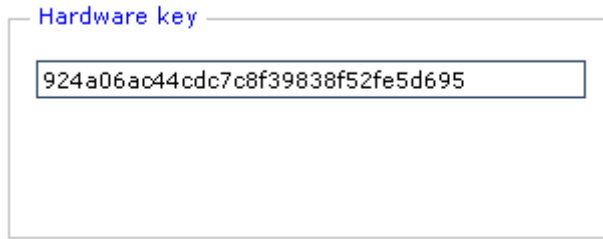


Figure 54: unit's hardware key.

- Valid license: displayed in the list of the "Licenses" tab. Also you can visit <http://www.myaudience.com/> to purchase a new license.

7.3.1. Add new Measuring Unit

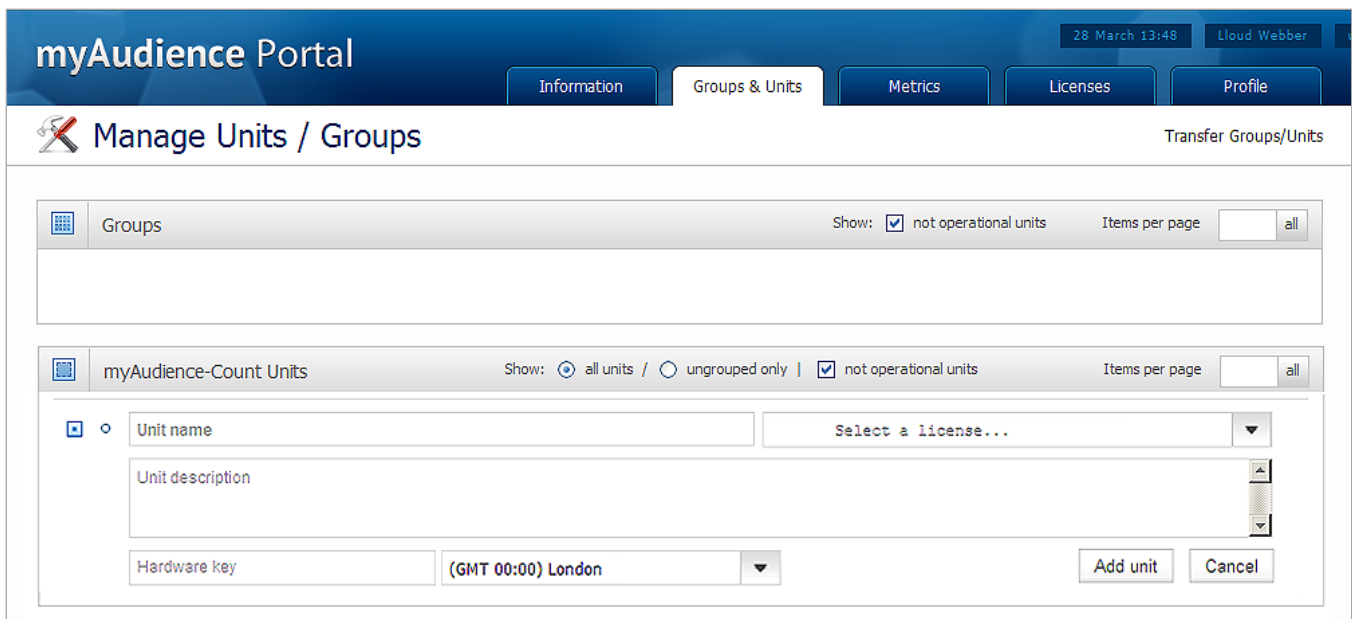


Figure 55: Groups & Units tab.

To add a new Measuring Unit, access the "Groups & Units" tab at <http://portal.myaudience.com/units.php> (Figure 55) and follow next steps:

- Press the "Add unit" button at the Units' list header:

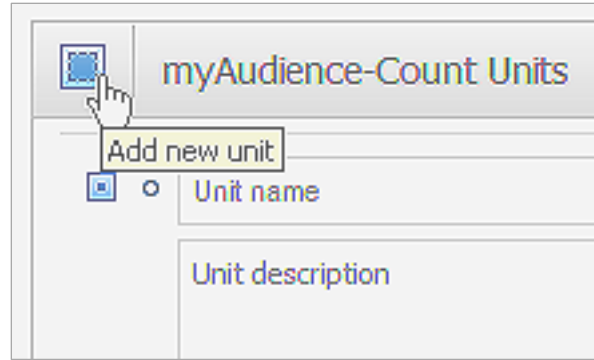


Figure 56: "Add unit" button.

2. Enter the Measuring Unit's name and description how you would like it to be displayed in the list of your Measuring Units on Reports Portal.
3. Enter Hardware key (see section 6.5) and pick a license for a new Measuring Unit from the drop-down list.
4. Select the Measuring Unit's location time zone and press "Add unit" button.

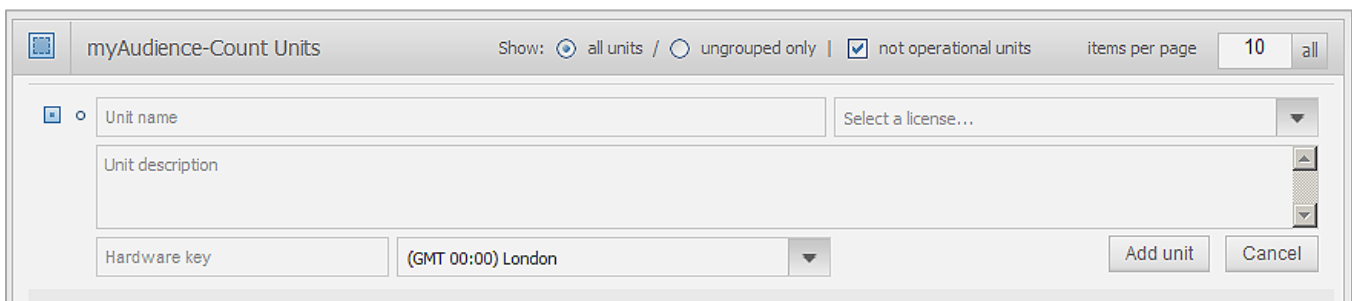


Figure 57: unit's fields.

"Edit unit" option could be used later to change the Measuring Unit name, description and hardware key. License number cannot be edited.

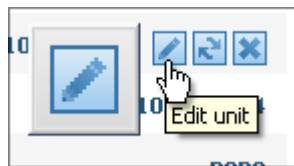


Figure 58: "Edit unit" button.

5. After the first successful connection icon next to the Measuring Unit at the Reports Portal turns green (see section 7.5 for status icon semantics)

Optionally:

To force Measuring Device connection, access the Measuring Device's WebUI from configuration PC (see section 6.1) and press "Test connection to portal" button at the "Network configuration" tab (see section 6.3). Make sure

that system tags at the "Administration" tab of the Measuring Device's Web UI's "Administration" tab match with the values entered at the Report Portal

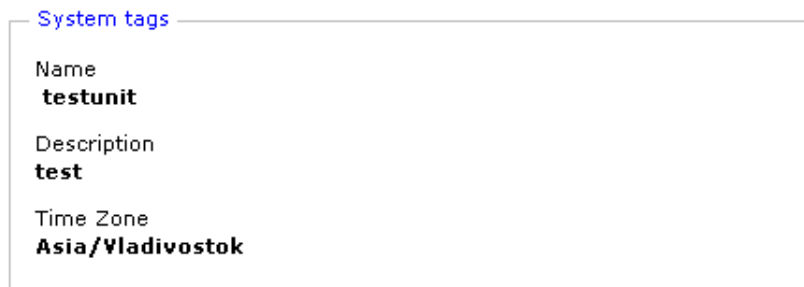


Figure 59: system tags at the unit.

7.3.2. Reset Measuring Device

Measuring Device can be reset with any of three reset levels:

- Password Reset – resets access password of the Measuring Device
- Settings Reset – resets all settings configurable through the Measuring Device's WebUI
- Factory Reset – resets the Measuring Device to the initially installed software and configuration settings

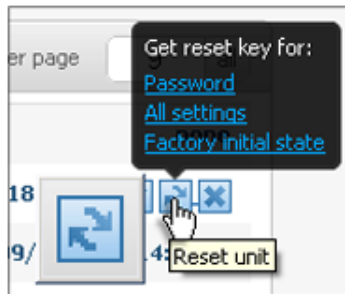


Figure 60: reset button and reset type selector

To reset the Measuring Device:

1. Access the Groups & Units" tab at <http://portal.myaudience.com/units.php>, choose the record in the list of Measuring Units related to the physical Measuring Device to be reset and select the reset level.
2. Save the reset file to your computer.
3. Access the reset file stored and copy it to the removable USB drive's root folder.
4. Insert the removable USB drive with reset file into the Measuring Device's USB slot.
5. Restart Measuring Device either by the hardware power button or through the WebUI (see section 6.5).
6. Measuring Device should beep upon reset.
7. After that remove the USB drive from Measuring Device and restart it again.

7.3.3. Delete the Measuring Unit

Measuring Unit deletion could be done on two levels: delete and purge.

When the hardware is removed, Measuring Unit could be deleted from Reports Portal. After deletion on Reports Portal all data accumulated by deleted Measuring Unit will still be available on the Reports Portal for your use till Measuring Unit is "Purged". If the license of the Deleted Measuring Unit is still valid its status will be automatically changed to "Detached" and it could further be attached to another Measuring Unit. Please see section 7.7 for detailed license model explanation.

To delete the Measuring Unit:

1. Access the Reports Portal and go to the "Groups & Units" tab
<http://portal.myaudience.com/units.php>
2. Access the Measuring Unit you want to delete.
3. Delete the Measuring Unit by pressing the "Delete unit" button next to the Measuring Unit's name in the list.



Figure 61: "Delete unit" button.

7.3.4. Purge the Measuring Unit

When the Measuring Unit is deleted, all data gathered while it was operational remain available by request. To finally remove all data and Measuring Unit from all records you need to purge the Measuring Unit.

Note! After the Measuring Unit purge, all data gathered by this Measuring Unit will be deleted and cannot be restored.

To purge the Measuring Unit:

1. Access the Reports Portal and go to the "Groups & Units" tab
<http://portal.myaudience.com/units.php>
1. Access the deleted Measuring Unit.
2. Press the "Purge unit" button (available for deleted units only).



Figure 62: "Purge unit" button.

7.4. Group creation

Group creation option is suggested for your convenience to structure your Measuring Units lists and perform aggregated metrics calculation. When the group is selected in Metric Calculation wizard it will provide summation of metrics from separate Measuring Units included in that group. Measuring Units can be grouped arbitrary on your own discretion (e.g. by location, time zone, date of installation, etc.); same Measuring Unit can be included into as many groups as you wish.

7.4.1. To add a group

1. Access the Reports Portal and go to the "Groups & Units" tab
<http://portal.myaudience.com/units.php>
2. Press the "Add group" button at the Groups' list header:

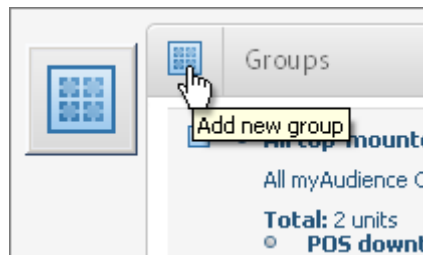


Figure 63: "Add group" button.

3. Enter the group name and description

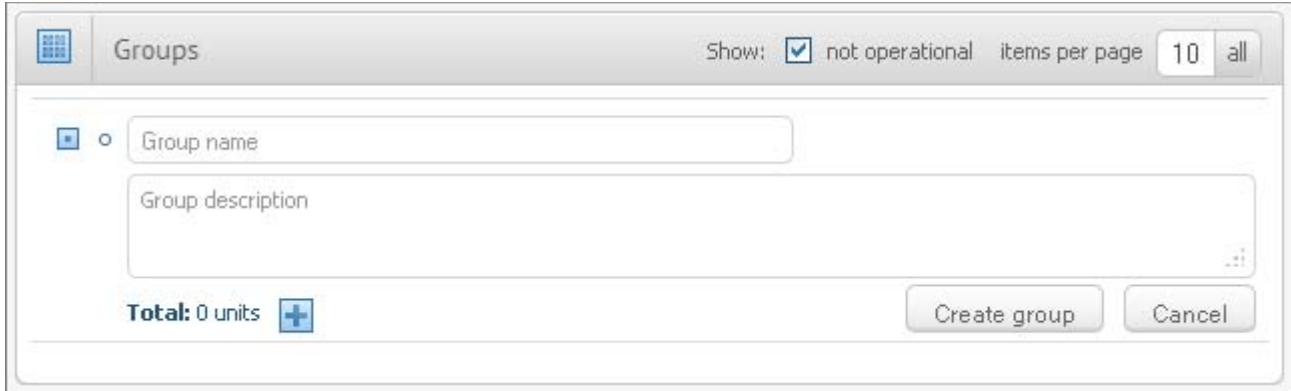


Figure 64: group's fields.

4. Press the "Add Unit" button

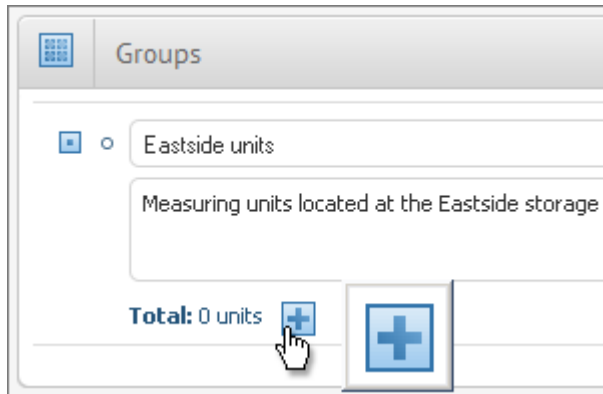


Figure 65: "Add units" button.

5. Pick the Measuring Units from the list and press the "Accept" button (Figure 66).

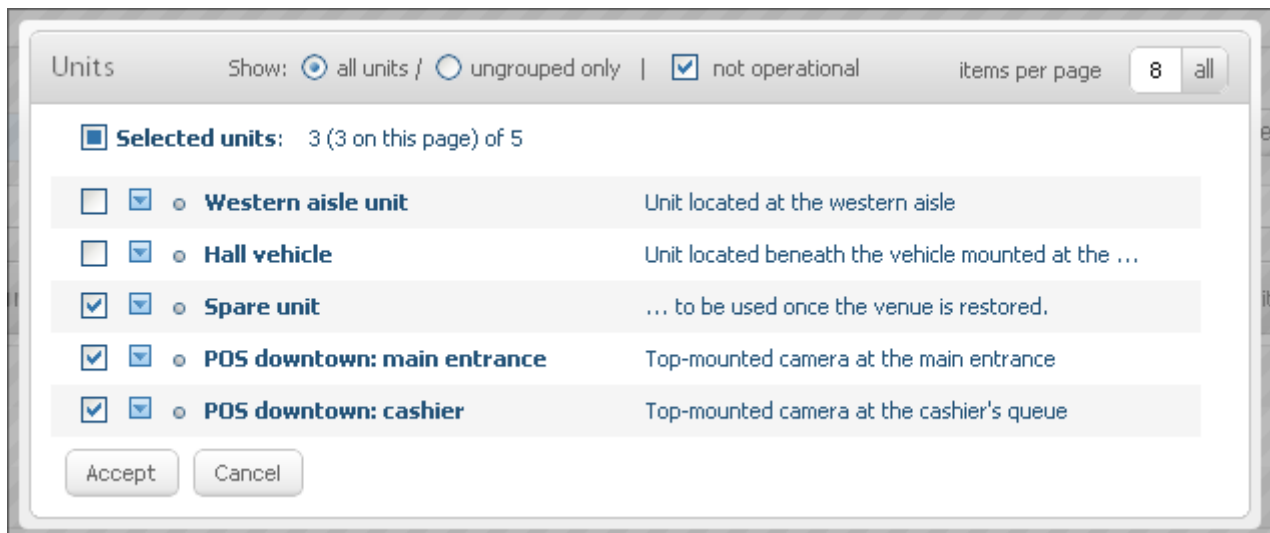


Figure 66: unit picker.

6. Press the "Create group" button.

7.4.2. To edit the group

1. Access the Reports Portal and go to the "Groups & Units" tab
<http://portal.myaudience.com/units.php>
2. Press the "Edit group" button next to the group to be changed.

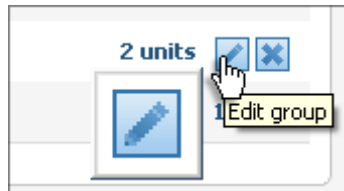


Figure 67: "Edit group" button.

3. Edit the group's name/description and include the unit(s) into the group exactly the same way as while creating a new group; to exclude the Measuring Unit from the group, press the "Remove from group" shortcut button next to the Measuring Unit's name.

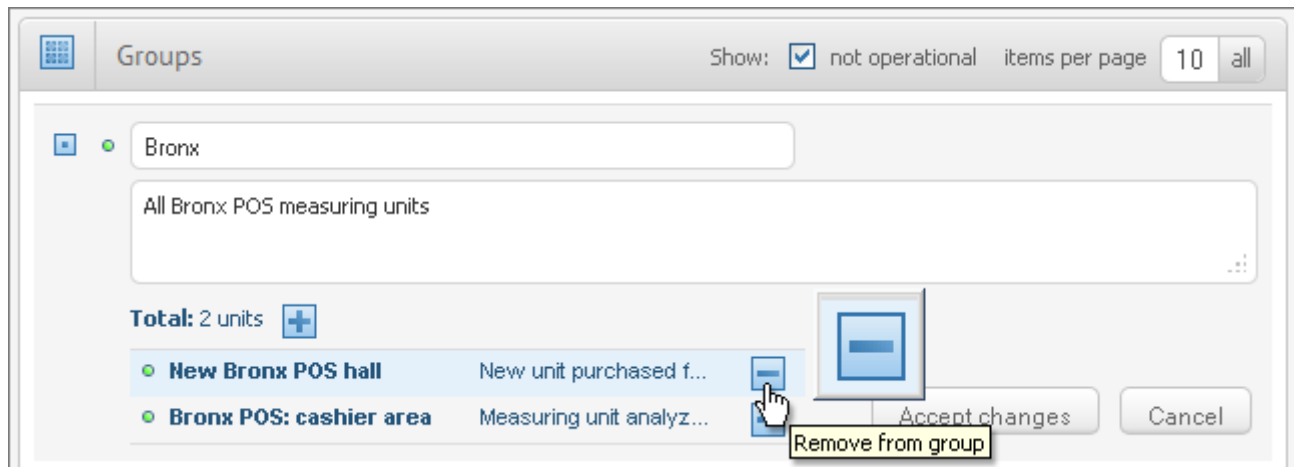


Figure 68: "Remove unit" button.

4. When done, press the "Accept changes" button.

Removing Measuring Unit from group records will not affect its registration on Reports Portal. It will still be available, operational and registered as a solitary unit.

7.4.3. To remove the group

Removing the group does not affect in any way Measuring Unit record on Portal. All Measuring Units stay operational and continue gathering data and transferring it to Reports Portal. All previous, current and future metrics calculation for these Measuring Units will be accessible irrespectively the deletion of any group where Measuring Units were included to.

To remove the group:

1. Access the Reports Portal and go to the "Groups & Units" tab <http://portal.myaudience.com/units.php>
2. Press the "Delete group" button next to the group intended to be deleted.

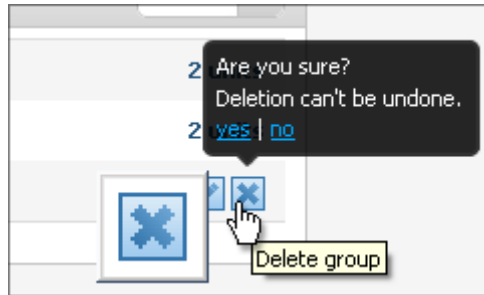


Figure 69: "Delete group" button.

7.5. Managing Measuring Units and groups

All information about individual Measuring Units and groups of Measuring Units is presented at the "Groups & Units" tab. Measuring Units can be grouped arbitrary on your own discretion; any Measuring Unit can be included into as many groups as you wish (Figure 60).

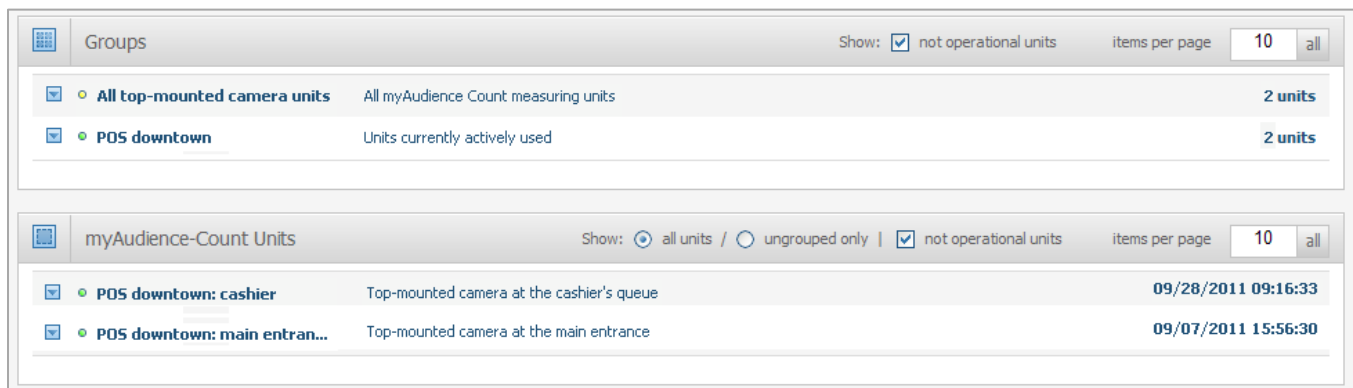


Figure 70: groups and units lists.

Both lists are quite similar:

1. Each item in the list could be expanded/collapsed with a click at the item's list icon:

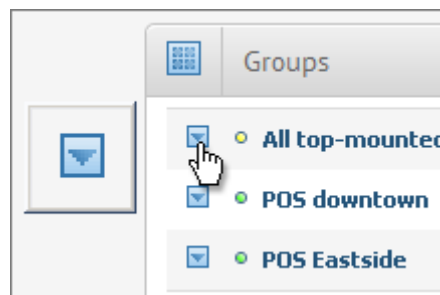


Figure 71: expanding/collapsing the list item.

2. Information provided for each Measuring Unit in the expanded view (Figure 72) includes:

- Measuring Unit name
- Measuring Unit description
- license number
- Measuring Unit status
- hardware key
- date and time of unit synchronization with Reports Portal
- time zone definition

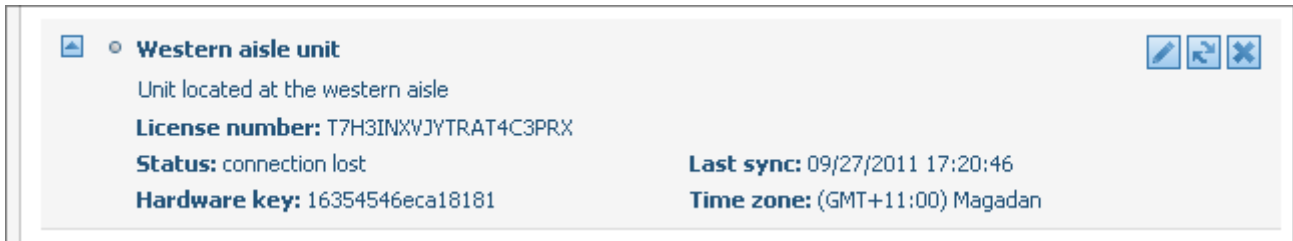


Figure 72: unit's details.

3. Information provided for each group in the expanded view includes (Figure 73):

- group name
- group description
- list of Measuring Units with operability indicators, names and descriptions
- Measuring Units' names and description

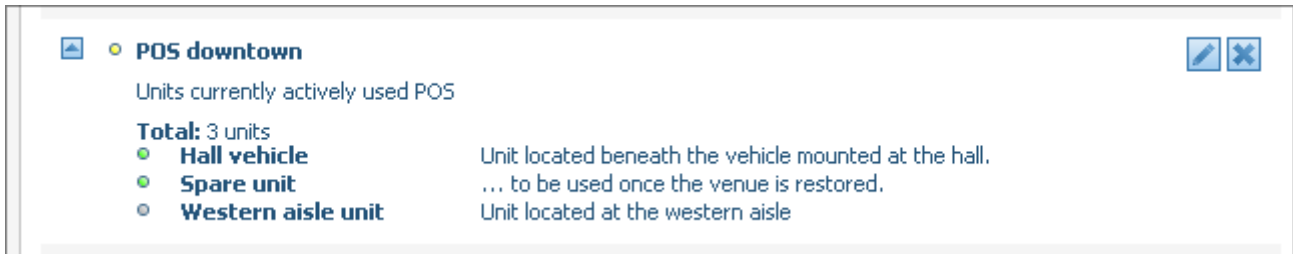


Figure 73: group's details.

4. Each Measuring Unit/group in the list is supplied with operability color indicator.

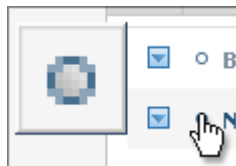


Figure 74: operability indicator.

Measuring Units' color semantics:

- Measuring Unit is fully operational
- connection with Measuring Unit is lost

- Measuring Unit's license is expired (see section 7.7 for details)
- Measuring Unit is deleted (see section 7.3.3)

Groups' color semantics:

- all Measuring Units included in the group are fully operational
- group contains operational and non-operational Measuring Units
- all Measuring Units in a group are non-operational

5. Items in the list could be filtered by following criteria (Figure 75):
 - all Measuring Units/ungrouped Measuring Units (units only)
 - filter out non-operational Measuring Units (both groups and units)

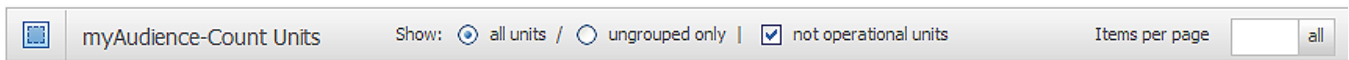


Figure 75: measuring units' filters.



Figure 76: groups' filters.

6. By default the lists display 10 items per page. You can navigate between pages in a convenient way selecting the page number or entering amount of items to be displayed per page.

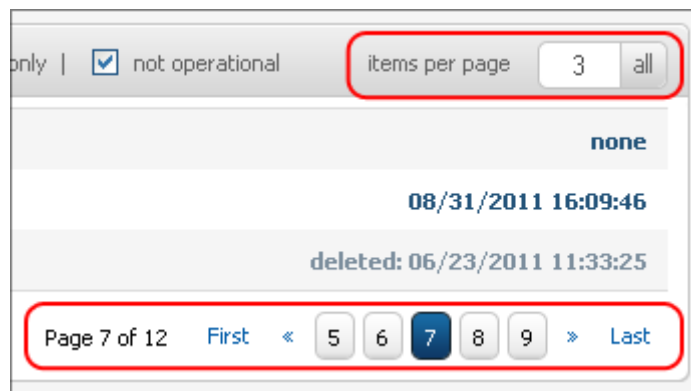


Figure 77: list navigation/"items per page" control.

7. Brief summary of Measuring Units and licenses status is displayed at the "Information" tab of the Reports Portal <http://portal.myaudience.com/information.php> (Figure 78):

Units & Licenses	
Units	44
fully operational:	36
not operational:	3
deleted & stored:	5
Licenses	90
new & inactive:	30
active:	57
attached:	34
detached:	22
about to expire:	1
expired:	3

Figure 78: units/licenses summary.

7.6. Reports Portal notification service

Reports Portal offers two ways to notify you about important system events:

1. With an information balloon at the Reports Portal (you must be logged on to the Report Portal) (Figure 79)
2. Via e-mail notification to the address provided by you in User profile (see section 7.2)

The screenshot shows the myAudience Portal interface. At the top, there is a navigation bar with tabs for Information, Groups & Units, Metrics, Licenses, and Profile. The 'Information' tab is selected, displaying an 'Information Summary' section. Below this, there are three notification balloons, each with an information icon (i) and a close icon (x). The first balloon is titled '15 days license expiration remainder' and states that licenses 9GTRY-Q7Q55 will expire in 15 days. The second balloon is titled 'Connection with device was lost' and indicates that the connection with device 'device_45_yura' was lost on 09/08/2011 at 17:00:01. The third balloon is titled 'Connection with device was restored' and indicates that the connection with device 'device_45_yura' was restored on 09/07/2011 at 14:30:01. Each notification includes a 'Read more' link.

Figure 79: information balloons.

Your notifications archive can be accessed at the “Information” tab of Reports Portal at <http://portal.myaudience.com/information.php> in the “Notifications History” list (Figure 80).

Notifications History		Items per page
<input checked="" type="checkbox"/>	Connection with device was lost	09/19/2011 14:15:01
<input checked="" type="checkbox"/>	Connection with device was restored	09/19/2011 14:00:01
<input checked="" type="checkbox"/>	Connection with device was lost	09/16/2011 08:45:02
<input checked="" type="checkbox"/>	15 days license expiration reminder	09/16/2011 00:00:01
<input checked="" type="checkbox"/>	Connection with device was restored	09/15/2011 15:15:02
<input checked="" type="checkbox"/>	Connection with device was lost	09/15/2011 13:00:02
<input checked="" type="checkbox"/>	Connection with device was restored	09/15/2011 11:30:02
<input checked="" type="checkbox"/>	Connection with device was restored	09/12/2011 10:45:01
<input checked="" type="checkbox"/>	Connection with device was lost	09/09/2011 18:15:02
<input checked="" type="checkbox"/>	Connection with device was restored	09/09/2011 16:30:01

Page 5 of 69 First < 3 4 5 6 7 > Last

Figure 80: Reports Portal notifications history.

All your important actions at the Reports Portal are logged in “Events Log” section at the “Information” tab (Figure 81):

Events Log		Items per page
<input checked="" type="checkbox"/>	Metrics were calculated	09/27/2011 15:55:13
<input checked="" type="checkbox"/>	All metrics were exported to file	09/27/2011 15:55:04
<input checked="" type="checkbox"/>	Metrics were calculated	09/27/2011 15:55:03
<input checked="" type="checkbox"/>	All metrics were exported to file	09/27/2011 15:54:05
<input checked="" type="checkbox"/>	All metrics were exported to file	09/27/2011 15:54:04
<input checked="" type="checkbox"/>	Metrics were calculated	09/27/2011 15:54:03
<input checked="" type="checkbox"/>	All metrics were exported to file	09/27/2011 15:53:52
<input checked="" type="checkbox"/>	Metrics were calculated	09/27/2011 15:53:51
<input checked="" type="checkbox"/>	Group "hjhghghghg" was removed	09/27/2011 15:47:32
<input checked="" type="checkbox"/>	Group "Array" was removed	09/27/2011 15:47:07

Page 7 of 273 First < 5 6 7 8 9 > Last

Figure 81: Reports Portal events log.

Both lists are paged. To navigate through pages, click the page number in the lower right corner of the section.

7.7. License management

7.7.1. myAudience-Count licensing model overview

Each myAudience-Count Measuring Unit requires dedicated valid myAudience-Count license; no data will be gathered by Measuring Device without valid license obtained. The license is attached to the Measuring Unit on Reports Portal. License becomes detached from the Measuring Unit, when Measuring Unit is deleted.

Each software license is valid for 1 year after activation and can be extended by purchasing the license extension at <http://www.myaudience.com/count-buynow>. The license is activated when attached to the Measuring Unit for the first time (refer to section 7). License validity period continues to run out even after license is detached from Measuring Unit.

1. To view all your available licenses, log on the Reports Portal and go to the "Licenses" tab <http://portal.myaudience.com/licenses.php> (Figure 82).

License ID	Status	Measuring Unit	Expiration Date
99999-77777-44444-66666-33333	Valid (Green dot)	MU-75633	03/03/2012 00:02:02
12443-47292-53423-54520-3413	Valid (Green dot)	(none)	03/02/2012 11:00:00
3RK8M-DJGPJ-9GTRY-Q7Q57	Expired (Red dot)	Natasha's comp	Expired: 04/16/2011 11:00:00
12354-47292-53423-54520-3413	Valid (Green dot)	(none)	03/02/2012 11:00:00
ZNPL36JBBHREWU8BWQMK	Valid (Green dot)	Count 34	09/02/2012 13:03:00
7P9447UB8AYYBJB8VBBK	Valid (Green dot)	(none)	08/17/2011 11:00:00
FC787FB7DCOLBAWL3QNA	Valid (Green dot)	(none)	08/30/2012 11:00:00
YRAFQFKBBQYDKA7X4FJ7	New (Grey dot)	(none)	1.9 year
3RK8M-DJGPJ-9GTRY-Q7Q49	Expired (Red dot)	(none)	Expired: 01/01/2011 11:00:00
QCMEZPHUKYYA9DCRBJHB	Valid (Green dot)	jhltuity	08/30/2012 11:00:00

Figure 82: licenses list.

2. Each license in the list is supplied with its validity indicator:
 - new (not activated) license
 - valid (and will be valid for the next 2 months)

- license is about to expire (less than 30 days are left to the expiration date)
 - expired license
3. The following information is provided for each license in expanded view (Figure 83):
- license number
 - name of attached Measuring Unit
 - license status
 - license expiration time



Figure 83: license details.

4. Licenses in the list can be filtered to exclude the expired ones.

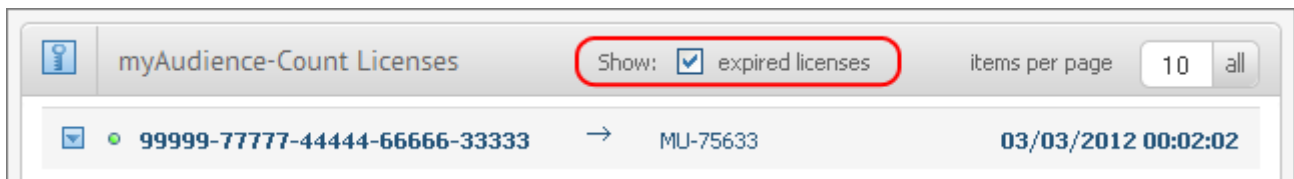


Figure 84: licenses filter.

5. Brief summary of licenses and Measuring Units status is available at the “Information” tab of the Reports Portal <http://portal.myaudience.com/information.php>

Units & Licenses	
Units	44
fully operational:	36
not operational:	3
deleted & stored:	5
Licenses	90
new & inactive:	30
active:	57
attached:	34
detached:	22
about to expire:	1
expired:	3

Figure 85: units/licenses summary.

7.7.2. To purchase new or extend the existing license

1. To buy a new license:

- purchase directly at <http://www.myaudience.com/count-buynow>
- or access Reports Portal and press the "Purchase a new license" button in the list header of Licenses tab at <http://portal.myaudience.com/licenses.php> (Figure 86)

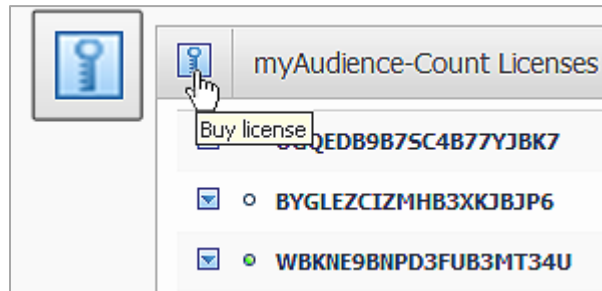


Figure 86: "Purchase a license" button.

2. To extend an existing license:

- pay for extension directly on <http://www.myaudience.com/count-buynow>
- or expand license information in the list of licenses on Reports Portal <http://portal.myaudience.com/licenses.php> and press the button at the right for the corresponding license (Figure 87)

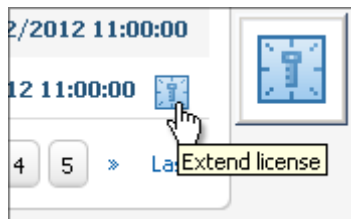


Figure 87: "Extend a license" button.

7.8. Understanding the measurements

Please refer to <http://www.myaudience.com/count-metrics> for brief explanation of audience measurement metrics supported by myAudience-Count.

7.8.1. Metrics calculation wizard

myAudience-Count provides you with flexibility to analyze processed statistical data gathered by the myAudience-Count Measuring Units within any time range and any Measuring Units' scope.

1. To start new metrics' calculation session, access the Reports Portal "Metrics" tab at <http://portal.myaudience.com/metrics.php> and press "Calculate New Metrics" link (Figure 88).

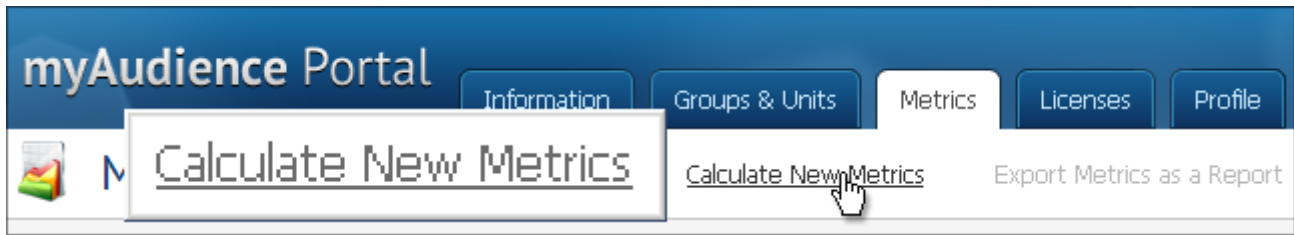


Figure 88: "Calculate new metrics" link.

This will invoke the wizard offering you options to specify:

- type of metrics to calculate,
- time boundaries restricting gathered measurements data used for metrics' calculation,
- groups/units to be included into the metrics calculation scope.

Wizard has three tabs to set the calculation parameters (Figure 89)

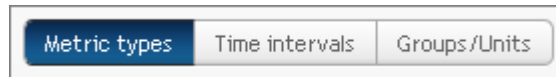


Figure 89: calculation wizard's navigation tabs.

2. Select the metrics for calculation:

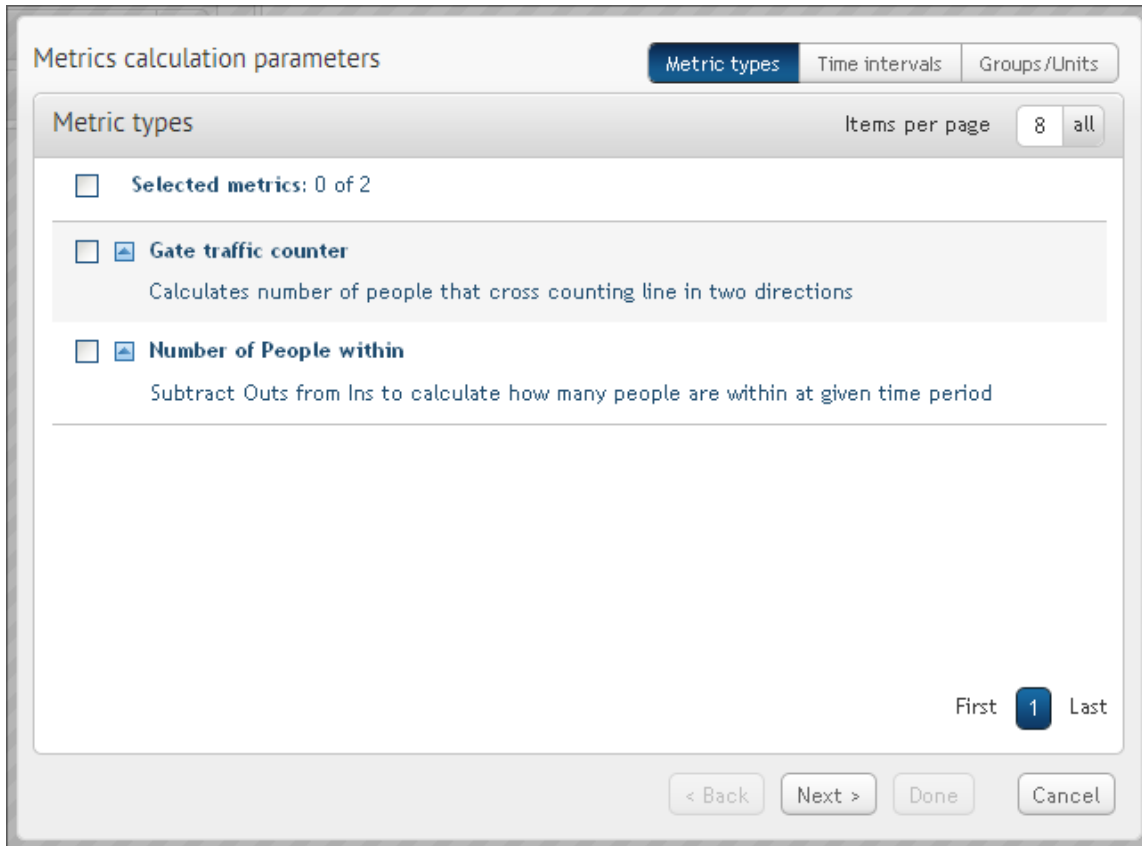


Figure 90: "Metric types" calculation wizard tab.

3. Select the time interval

Metrics calculation parameters

Metric types Time intervals Groups/Units

Time intervals

Main interval

From: 09/19/2011 00:00:00 To: 09/26/2011 00:00:00

Additional interval

From: 09/11/2011 00:00:00 To: 09/18/2011 00:00:00

< Back Next > Done Cancel

Figure 91: "Time intervals" calculation wizard tab.

Note! When the time interval for metrics is set it will refer to the **local time of the Measuring Device**. Time zone difference is not calculated on a chart scale. This is to provide convenient synchronizing and comparing of data gathered in various time zones.

It means: when few Measuring Devices from different time zones are selected for metrics calculation, data marked with 9 a.m. time point will reflect the 9 a.m. of local time for each Measuring Device without time zone convergence.

4. Select the units/groups (Figure 92):

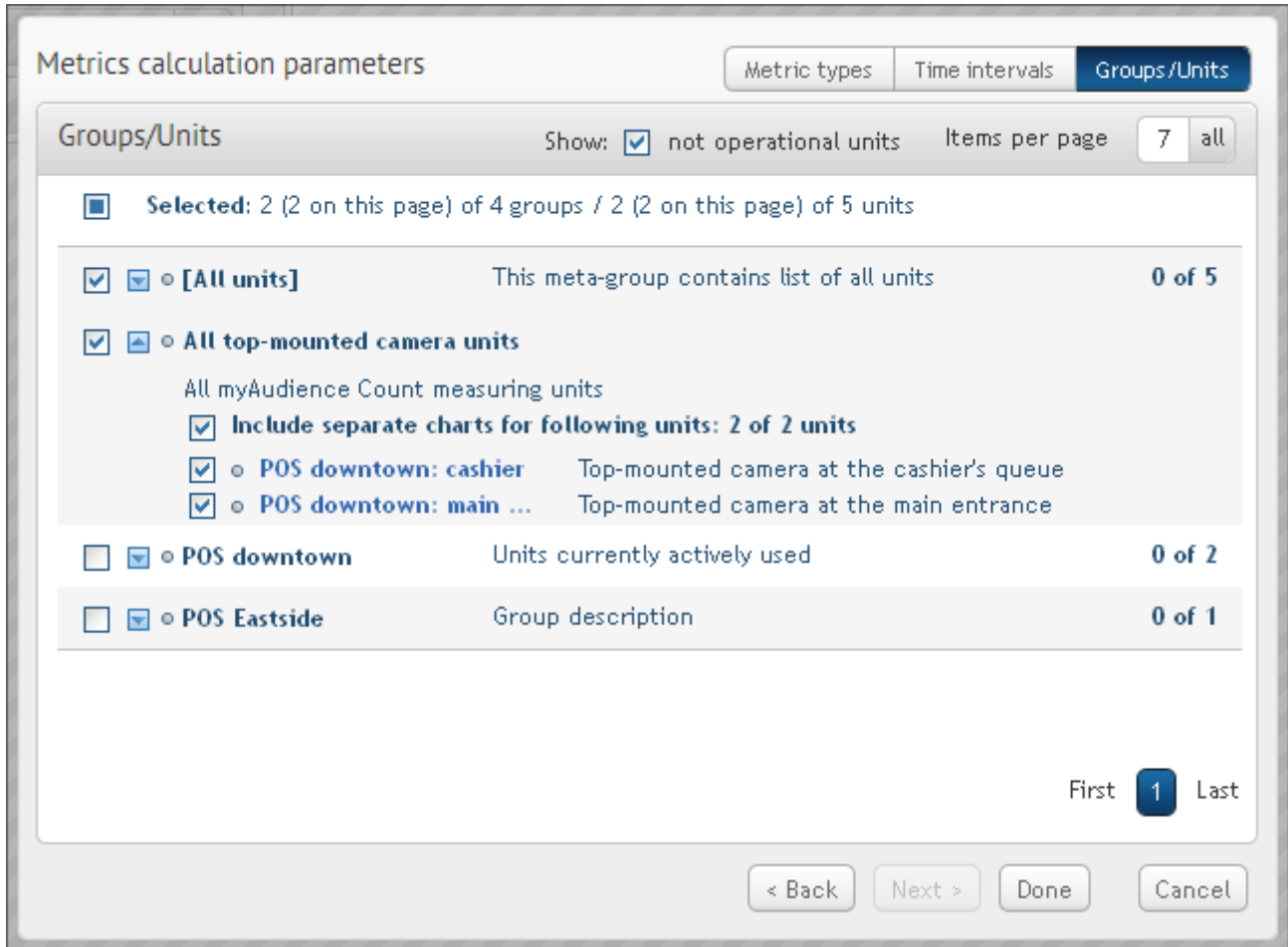


Figure 92: "Groups/Units" calculation wizard tab.

Note! While including a group in the calculation scope you are able to get a separate charts for any unit(s) included into this group selecting them explicitly.



Figure 93: "include separate charts" checkmarks.

5. To close the wizard, discarding all entered data, press "Cancel".
6. Press "Done" to accept the entered data and launch the metrics calculation.

Wait till you see the metrics' charts (Figure 94) along with sidebar to the left (Figure 96).

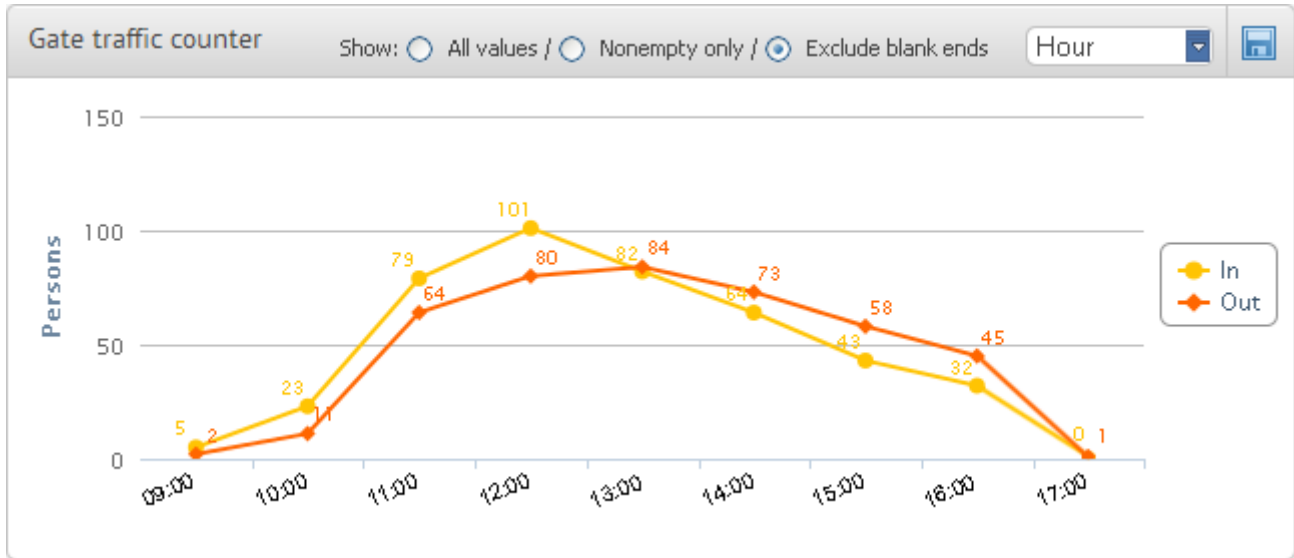


Figure 94: chart for gate traffic counter metric.

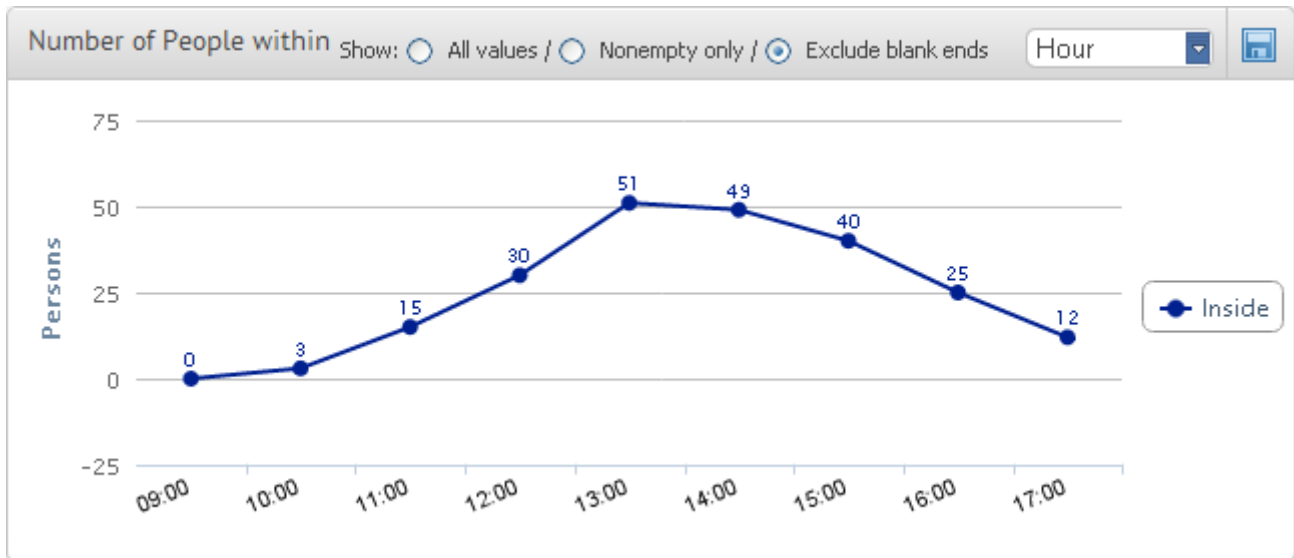


Figure 95: chart for number of people within metric.

7.8.2. Sidebar control options

You can use the sidebar menu (Figure 96) to adjust metrics parameters in a quick way, selecting the corresponding button to invoke the wizard with filled-in data:

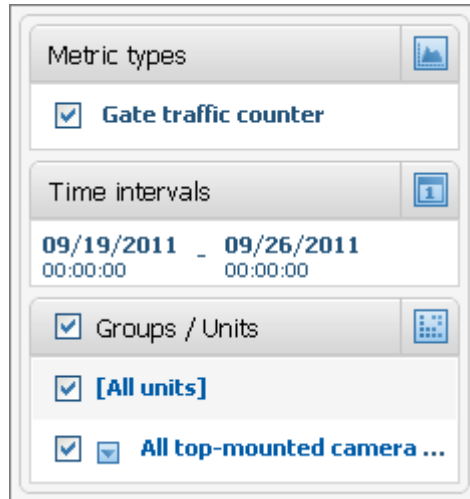


Figure 96: metric charts sidebar.

1. Add/remove a group for metrics calculation directly from the sidebar (Figure 97).

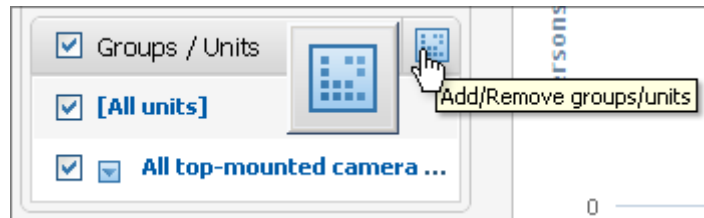


Figure 97: sample: "Groups/units" button.

2. Change the time interval for metrics calculation (Figure 98)



Figure 98: time interval control.

3. Change metrics type to be calculated (Figure 99)

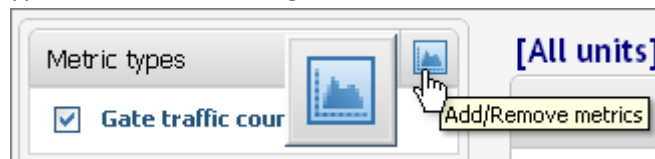


Figure 99: metrics type control.

7.8.3. Charts management

Use the chart controls located at the chart's header to filter the presented information:



Figure 100: metrics chart filters.

1. Select "Nonempty only" to remove from the chart all Measuring Unit s (sub-intervals) with no data.
2. Select "Exclude blank ends" to remove all empty intervals at the beginning/end of the specified interval.
3. To restore the original chart select "All values" radio button.
4. Change discretization level in the drop-down list (Figure 101).

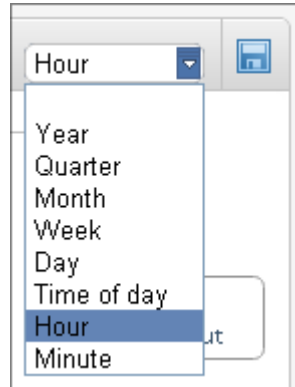


Figure 101: discretization level selection drop-down list.

5. Any line direction presented at any chart can be disabled/enabled by clicking the category name in the chart's legend. By default all categories defined for this type of chart are enabled.



Figure 102: line direction attributes.

7.8.4. Data export

Calculated metrics can be exported and downloaded in *.csv format.

1. To download the single report for all metrics in a single file, click the "Export metrics as a Report" link after metrics has been displayed on the chart.

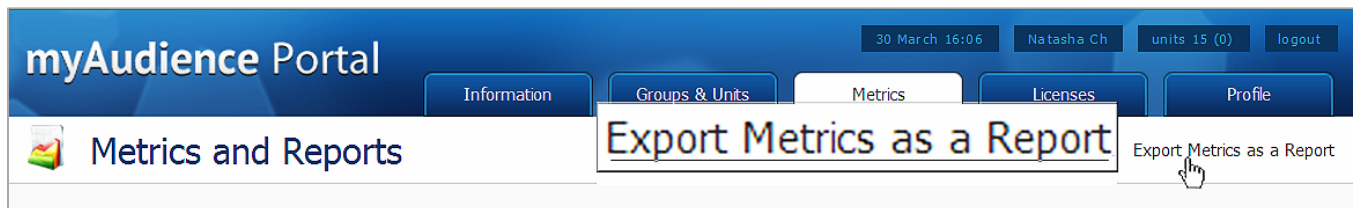


Figure 103: "Export metrics as a Report" link.

2. To download a separate file with a single metrics report, click the icon in the top-right corner of the corresponding chart:

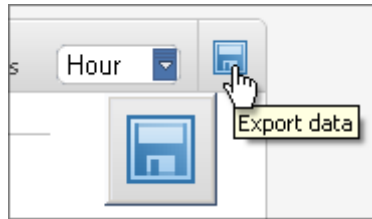


Figure 104: "Export a single chart" icon.

Note! For both export options filters applied to the metrics' charts and selected discretization level will be applied to the generated reports as well.

All data gathered by the particular unit is stored and can be included into the metrics' calculation scope until the unit's record is purged (see section 7.3.3).